

## Product datasheet for **TA338384**

### Cytokeratin 9 (KRT9) Rabbit Polyclonal Antibody

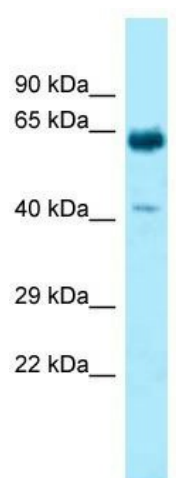
#### Product data:

Product Type:	Primary Antibodies
Applications:	WB
Recommended Dilution:	WB
Reactivity:	Human
Host:	Rabbit
Isotype:	IgG
Clonality:	Polyclonal
Immunogen:	The immunogen for anti-KRT9 antibody is: synthetic peptide directed towards the C-terminal region of Human KRT9. Synthetic peptide located within the following region: EIELSQLSKKAALEKSLEDTKNRYCGQLQMIQEIQISNLEAQITDVRQEI
Formulation:	Liquid. Purified antibody supplied in 1x PBS buffer with 0.09% (w/v) sodium azide and 2% sucrose. <i>Note that this product is shipped as lyophilized powder to China customers.</i>
Purification:	Affinity Purified
Conjugation:	Unconjugated
Storage:	Store at -20°C as received.
Stability:	Stable for 12 months from date of receipt.
Predicted Protein Size:	62 kDa
Gene Name:	keratin 9
Database Link:	<a href="#">NP_000217</a> <a href="#">Entrez Gene 3857 Human P35527</a>
Background:	This gene encodes the type I keratin 9, an intermediate filament chain expressed only in the terminally differentiated epidermis of palms and soles. Mutations in this gene cause epidermolytic palmoplantar keratoderma.
Synonyms:	CK-9; EPPK; K9
Note:	Immunogen Sequence Homology: Human: 100%; Dog: 93%; Rat: 93%; Mouse: 93%; Bovine: 86%; Pig: 77%; Horse: 77%; Rabbit: 77%; Guinea pig: 77%



[View online »](#)

## Product images:



WB Suggested Anti-KRT9 Antibody; Titration: 1.0 ug/ml; Positive Control: Fetal Heart