

Product datasheet for **TA338382**

Mannan Binding Lectin (MBL2) Rabbit Polyclonal Antibody

Product data:

Product Type:	Primary Antibodies
Applications:	WB
Recommended Dilution:	WB
Reactivity:	Human
Host:	Rabbit
Isotype:	IgG
Clonality:	Polyclonal
Immunogen:	The immunogen for anti-MBL2 antibody: synthetic peptide directed towards the middle region of human MBL2. Synthetic peptide located within the following region: KEEAFLGITDEKTEGQFVDLTGNRLTYTNWNEGEPNNAGSDEDCVLLLLKN
Formulation:	Liquid. Purified antibody supplied in 1x PBS buffer with 0.09% (w/v) sodium azide and 2% sucrose. <i>Note that this product is shipped as lyophilized powder to China customers.</i>
Purification:	Affinity Purified
Conjugation:	Unconjugated
Storage:	Store at -20°C as received.
Stability:	Stable for 12 months from date of receipt.
Predicted Protein Size:	24
Gene Name:	mannose binding lectin 2
Database Link:	NP_000233 Entrez Gene 4153 Human P11226
Background:	This gene encodes the soluble mannose-binding lectin or mannose-binding protein found in serum. The protein encoded belongs to the collectin family and is an important element in the innate immune system. The protein recognizes mannose and N-acetylglucosamine on many microorganisms, and is capable of activating the classical complement pathway. Deficiencies of this gene have been associated with susceptibility to autoimmune and infectious diseases. [provided by RefSeq, Jul 2008]



[View online »](#)

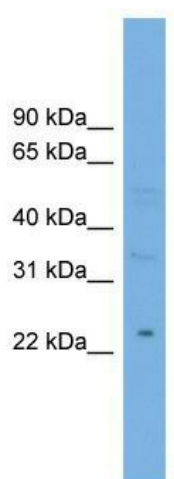
Synonyms: COLEC1; HSMBPC; MBL; MBL2D; MBP; MBP-C; MBP1; MBPD

Note: Immunogen Sequence Homology: Human: 100%; Pig: 92%; Horse: 92%; Rat: 77%; Goat: 77%; Sheep: 77%; Bovine: 77%

Protein Families: Druggable Genome

Protein Pathways: Complement and coagulation cascades

Product images:



WB Suggested Anti-MBL2 Antibody Titration: 0.2-1 ug/ml; Positive Control: Hela cell lysate