

Product datasheet for **TA338379**

SCNN1B Rabbit Polyclonal Antibody

Product data:

Product Type:	Primary Antibodies
Applications:	WB
Recommended Dilution:	WB
Reactivity:	Human
Host:	Rabbit
Isotype:	IgG
Clonality:	Polyclonal
Immunogen:	The immunogen for anti-SCNN1B antibody: synthetic peptide directed towards the C terminal of human SCNN1B. Synthetic peptide located within the following region: QPDTAPRSPNTGYPYSEQALPIPGTPPPNYDSLRLQPLDVIESDSEGDAL
Formulation:	Liquid. Purified antibody supplied in 1x PBS buffer with 0.09% (w/v) sodium azide and 2% sucrose. <i>Note that this product is shipped as lyophilized powder to China customers.</i>
Purification:	Affinity Purified
Conjugation:	Unconjugated
Storage:	Store at -20°C as received.
Stability:	Stable for 12 months from date of receipt.
Predicted Protein Size:	70 kDa
Gene Name:	sodium channel epithelial 1 beta subunit
Database Link:	NP_000327 Entrez Gene 6338 Human P51168
Background:	Nonvoltage-gated, amiloride-sensitive, sodium channels control fluid and electrolyte transport across epithelia in many organs. These channels are heteromeric complexes consisting of 3 subunits: alpha, beta, and gamma. This gene encodes the beta subunit, and mutations in this gene have been associated with pseudohypoaldosteronism type 1 (PHA1), and Liddle syndrome. [provided by RefSeq, Apr 2009]
Synonyms:	BESC1; ENaCb; ENaCbeta; SCNEB



[View online »](#)

Note: Immunogen Sequence Homology: Dog: 100%; Pig: 100%; Goat: 100%; Human: 100%; Bovine: 100%; Rabbit: 93%; Guinea pig: 93%; Horse: 92%; Rat: 86%; Mouse: 86%

Protein Families: Druggable Genome, Ion Channels: Other, Transmembrane

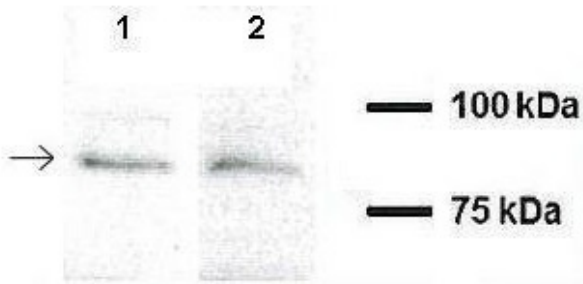
Protein Pathways: Taste transduction

Product images:



WB Suggested Anti-SCNN1B Antibody Titration:
0.125 ug/ml; ELISA Titer: 1:312500; Positive
Control: Jurkat cell lysate

SCNN1B



A549, H441