

Product datasheet for **TA338377**

NCF2 Rabbit Polyclonal Antibody

Product data:

Product Type:	Primary Antibodies
Applications:	WB
Recommended Dilution:	WB
Reactivity:	Human
Host:	Rabbit
Isotype:	IgG
Clonality:	Polyclonal
Immunogen:	The immunogen for anti-NCF2 antibody is: synthetic peptide directed towards the C-terminal region of Human NCF2. Synthetic peptide located within the following region: TVGDQGFDPDEPKESKADANNQTTEPQLKKGSQVEALFSYEATQPEDLEF
Formulation:	Liquid. Purified antibody supplied in 1x PBS buffer with 0.09% (w/v) sodium azide and 2% sucrose. <i>Note that this product is shipped as lyophilized powder to China customers.</i>
Purification:	Affinity Purified
Conjugation:	Unconjugated
Storage:	Store at -20°C as received.
Stability:	Stable for 12 months from date of receipt.
Predicted Protein Size:	60 kDa
Gene Name:	neutrophil cytosolic factor 2
Database Link:	NP_000424 Entrez Gene 4688 Human P19878
Background:	This gene encodes neutrophil cytosolic factor 2, the 67-kilodalton cytosolic subunit of the multi-protein NADPH oxidase complex found in neutrophils. This oxidase produces a burst of superoxide which is delivered to the lumen of the neutrophil phagosome. Mutations in this gene, as well as in other NADPH oxidase subunits, can result in chronic granulomatous disease, a disease that causes recurrent infections by catalase-positive organisms.
Synonyms:	NCF-2; NOXA2; P67-PHOX; P67PHOX



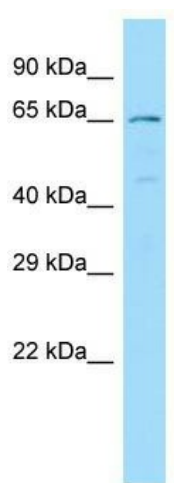
[View online »](#)

Note: Immunogen Sequence Homology: Human: 100%; Pig: 86%; Guinea pig: 86%; Dog: 79%; Bovine: 79%; Rabbit: 75%

Protein Families: Druggable Genome

Protein Pathways: Leukocyte transendothelial migration

Product images:



WB Suggested Anti-NCF2 Antibody; Titration: 1.0 ug/ml; Positive Control: MCF7 Whole Cell