

## Product datasheet for **TA338374**

### **BDKRB1 Rabbit Polyclonal Antibody**

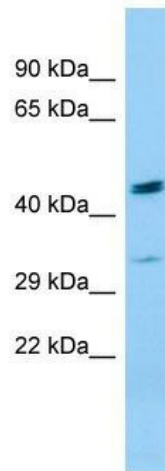
#### **Product data:**

Product Type:	Primary Antibodies
Applications:	WB
Recommended Dilution:	WB
Reactivity:	Human
Host:	Rabbit
Isotype:	IgG
Clonality:	Polyclonal
Immunogen:	The immunogen for anti-BDKRB1 antibody is: synthetic peptide directed towards the C-terminal region of Human BDKRB1. Synthetic peptide located within the following region: RTREEVSRTRCGGRKDSKTTALILTLVVAFLVCWAPYHFFAFLEFLFQVQ
Formulation:	Liquid. Purified antibody supplied in 1x PBS buffer with 0.09% (w/v) sodium azide and 2% sucrose. <i>Note that this product is shipped as lyophilized powder to China customers.</i>
Purification:	Affinity Purified
Conjugation:	Unconjugated
Storage:	Store at -20°C as received.
Stability:	Stable for 12 months from date of receipt.
Predicted Protein Size:	40 kDa
Gene Name:	bradykinin receptor B1
Database Link:	<a href="#">NP_000701</a> <a href="#">Entrez Gene 623 Human</a> <a href="#">P46663</a>



[View online »](#)

<b>Background:</b>	Bradykinin, a 9 aa peptide, is generated in pathophysiologic conditions such as inflammation, trauma, burns, shock, and allergy. Two types of G-protein coupled receptors have been found which bind bradykinin and mediate responses to these pathophysiologic conditions. The protein encoded by this gene is one of these receptors and is synthesized de novo following tissue injury. Receptor binding leads to an increase in the cytosolic calcium ion concentration, ultimately resulting in chronic and acute inflammatory responses. Several transcript variants encoding different isoforms have been found for this gene.
<b>Synonyms:</b>	B1BKR; B1R; BDKRB2; BKB1R; BKR1; BRADYB1
<b>Note:</b>	Immunogen Sequence Homology: Human: 100%; Mouse: 92%; Rat: 86%; Pig: 79%
<b>Protein Families:</b>	Druggable Genome, GPCR, Transmembrane
<b>Protein Pathways:</b>	Calcium signaling pathway, Complement and coagulation cascades, Neuroactive ligand-receptor interaction, Regulation of actin cytoskeleton

**Product images:**

Host: Rabbit; Target Name: BDKRB1; Sample  
Tissue: THP-1 Whole Cell lysates; Antibody  
Dilution: 1.0 ug/ml