

Product datasheet for **TA338373**

CACNA2D1 Rabbit Polyclonal Antibody

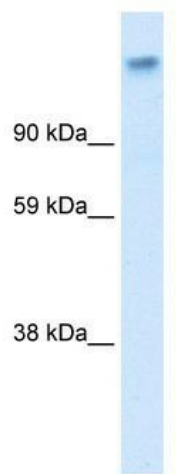
Product data:

Product Type:	Primary Antibodies
Applications:	WB
Recommended Dilution:	WB
Reactivity:	Human
Host:	Rabbit
Isotype:	IgG
Clonality:	Polyclonal
Immunogen:	The immunogen for anti-CACNA2D1 antibody: synthetic peptide directed towards the middle region of human CACNA2D1. Synthetic peptide located within the following region: PKSQEPVTLDFLDAELENDIKVEIRNKMIDGESGEKTFRTLTVKSQDERYI
Formulation:	Liquid. Purified antibody supplied in 1x PBS buffer with 0.09% (w/v) sodium azide and 2% sucrose. <i>Note that this product is shipped as lyophilized powder to China customers.</i>
Purification:	Affinity Purified
Conjugation:	Unconjugated
Storage:	Store at -20°C as received.
Stability:	Stable for 12 months from date of receipt.
Predicted Protein Size:	120 kDa
Gene Name:	calcium voltage-gated channel auxiliary subunit alpha2delta 1
Database Link:	NP_000713 Entrez Gene 781 Human P54289

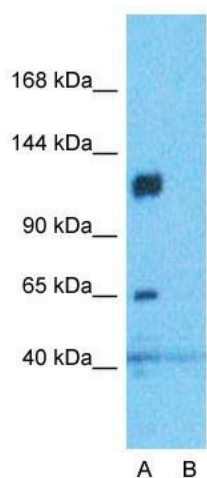


[View online »](#)

Background:	This gene encodes a member of the alpha-2/delta subunit family, a protein in the voltage-dependent calcium channel complex. Calcium channels mediate the influx of calcium ions into the cell upon membrane polarization and consist of a complex of alpha-1, alpha-2/delta, beta, and gamma subunits in a 1:1:1:1 ratio. Research on a highly similar protein in rabbit suggests the protein described in this record is cleaved into alpha-2 and delta subunits. Alternate transcriptional splice variants of this gene have been observed but have not been thoroughly characterized. [provided by RefSeq, Jul 2008]
Synonyms:	CACNA2; CACNL2A; CCHL2A; LINC01112; lncRNA-N3
Note:	Immunogen Sequence Homology: Dog: 100%; Pig: 100%; Rat: 100%; Horse: 100%; Human: 100%; Mouse: 100%; Bovine: 100%; Rabbit: 100%; Guinea pig: 100%
Protein Families:	Druggable Genome, Ion Channels: Other
Protein Pathways:	Arrhythmogenic right ventricular cardiomyopathy (ARVC), Cardiac muscle contraction, Dilated cardiomyopathy, Hypertrophic cardiomyopathy (HCM), MAPK signaling pathway

Product images:

WB Suggested Anti-CACNA2D1 Antibody
Titration: 0.12 ug/ml; ELISA Titer: 1:312500;
Positive Control: Human Muscle



Anti-CACNA2D1 Western Blot & Peptide Block Validation

Lysate: Fetal Muscle

Lane A: Primary Antibody
Lane B: Primary Antibody + Blocking Peptide

Primary Antibody Concentration: 1.0 μ g/ml
Peptide Concentration: 5.0 μ g/ml
Lysate Quantity: 25 μ g/lane
Gel Concentration: 12%

Host: Rabbit; Target Name: CACNA2D1; Sample Tissue: Fetal Muscle; Lane A: Primary Antibody; Lane B: Primary Antibody + Blocking Peptide; Primary Antibody Concentration: 1 μ g/ml; Peptide Concentration: 5 μ g/ml; Lysate Quantity: 25 μ g/lane; Gel Concentration: 12%