

Product datasheet for **TA338371**

CACNB1 Rabbit Polyclonal Antibody

Product data:

Product Type:	Primary Antibodies
Applications:	WB
Recommended Dilution:	WB
Reactivity:	Human
Host:	Rabbit
Isotype:	IgG
Clonality:	Polyclonal
Immunogen:	The immunogen for anti-CACNB1 antibody: synthetic peptide directed towards the N terminal of human CACNB1. Synthetic peptide located within the following region: EVFDPSPQGKYSKRKGRFKRSDGSTSSDTTNSFVRQGSAESYTSRPSDS
Formulation:	Liquid. Purified antibody supplied in 1x PBS buffer with 0.09% (w/v) sodium azide and 2% sucrose. <i>Note that this product is shipped as lyophilized powder to China customers.</i>
Purification:	Affinity Purified
Conjugation:	Unconjugated
Storage:	Store at -20°C as received.
Stability:	Stable for 12 months from date of receipt.
Predicted Protein Size:	66 kDa
Gene Name:	calcium voltage-gated channel auxiliary subunit beta 1
Database Link:	NP_000714 Entrez Gene 782 Human Q02641
Background:	The protein encoded by this gene belongs to the calcium channel beta subunit family. It plays an important role in the calcium channel by modulating G protein inhibition, increasing peak calcium current, controlling the alpha-1 subunit membrane targeting and shifting the voltage dependence of activation and inactivation. Alternative splicing occurs at this locus and three transcript variants encoding three distinct isoforms have been identified. [provided by RefSeq, Jul 2008]



[View online »](#)

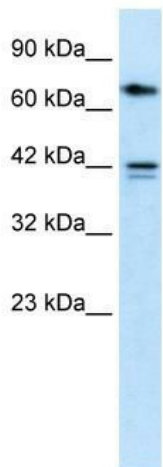
Synonyms: CAB1; CACNLB1; CCHLB1

Note: Immunogen Sequence Homology: Dog: 100%; Pig: 100%; Rat: 100%; Horse: 100%; Human: 100%; Mouse: 100%; Bovine: 100%; Rabbit: 100%; Zebrafish: 100%; Guinea pig: 100%

Protein Families: Druggable Genome, Ion Channels: Other

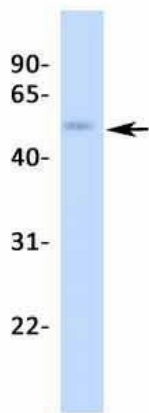
Protein Pathways: Arrhythmogenic right ventricular cardiomyopathy (ARVC), Cardiac muscle contraction, Dilated cardiomyopathy, Hypertrophic cardiomyopathy (HCM), MAPK signaling pathway

Product images:



WB Suggested Anti-CACNB1 Antibody Titration: 0.2-1 ug/ml; ELISA Titer: 1:62500; Positive Control: HepG2 cell lysate

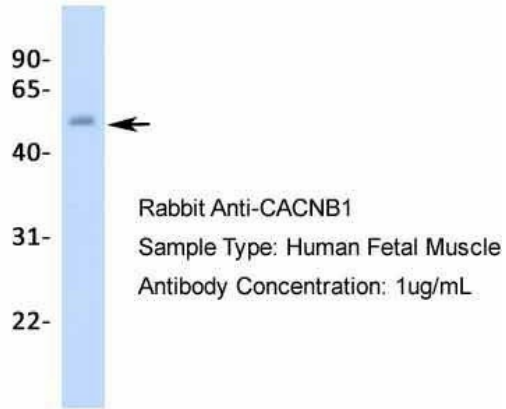
CACNB1



Rabbit Anti-CACNB1
 Sample Type: Human Adult Placenta
 Antibody Concentration: 1ug/mL

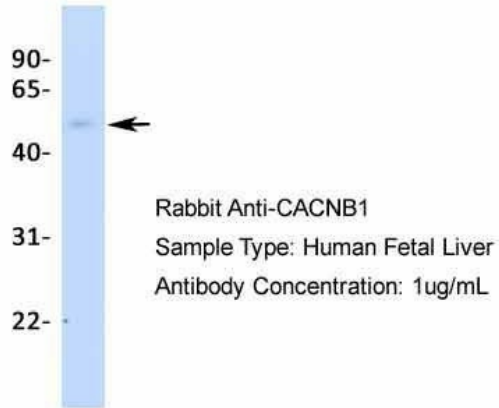
Host: Rabbit; Target Name: CACNB1; Sample Tissue: Human Adult Placenta; Antibody Dilution: 1.0 ug/ml

CACNB1



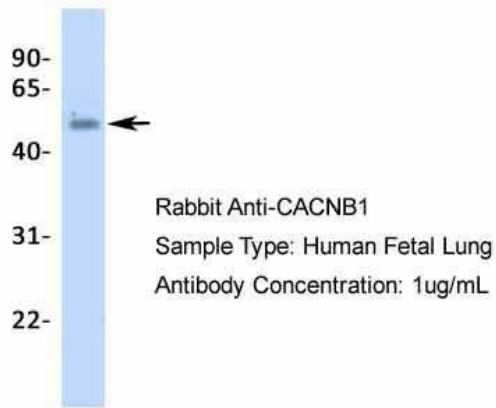
Host: Rabbit; Target Name: CACNB1; Sample Tissue: Human Fetal Muscle; Antibody Dilution: 1.0 µg/ml

CACNB1



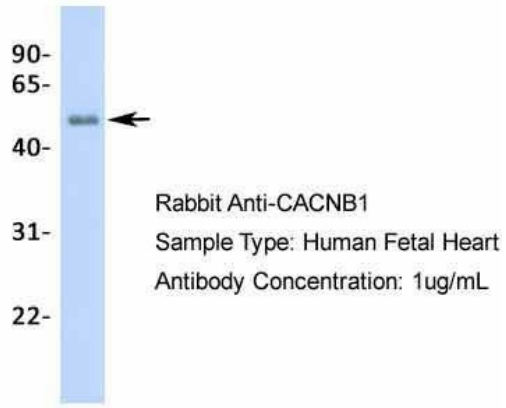
Host: Rabbit; Target Name: CACNB1; Sample Tissue: Human Fetal Liver; Antibody Dilution: 1.0 µg/ml

CACNB1



Host: Rabbit; Target Name: CACNB1; Sample Tissue: Human Fetal Lung; Antibody Dilution: 1.0 µg/ml

CACNB1



Host: Rabbit; Target Name: CACNB1; Sample
Tissue: Human Fetal Heart; Antibody Dilution: 1.0
ug/ml