

Product datasheet for **TA338369**

CACNB2 Rabbit Polyclonal Antibody

Product data:

Product Type:	Primary Antibodies
Applications:	WB
Recommended Dilution:	WB
Reactivity:	Human
Host:	Rabbit
Isotype:	IgG
Clonality:	Polyclonal
Immunogen:	The immunogen for anti-CACNB2 antibody: synthetic peptide directed towards the middle region of human CACNB2. Synthetic peptide located within the following region: DYLEAYWKATHPPSSSLPNLLSRTLATSSLPLSPTLASNSQGSQGDQRT
Formulation:	Liquid. Purified antibody supplied in 1x PBS buffer with 0.09% (w/v) sodium azide and 2% sucrose. <i>Note that this product is shipped as lyophilized powder to China customers.</i>
Purification:	Protein A purified
Conjugation:	Unconjugated
Storage:	Store at -20°C as received.
Stability:	Stable for 12 months from date of receipt.
Predicted Protein Size:	67 kDa
Gene Name:	calcium voltage-gated channel auxiliary subunit beta 2
Database Link:	NP_000715 Entrez Gene 783 Human Q08289
Background:	This gene encodes a subunit of a voltage-dependent calcium channel protein that is a member of the voltage-gated calcium channel superfamily. The gene product was originally identified as an antigen target in Lambert-Eaton myasthenic syndrome, an autoimmune disorder. Mutations in this gene are associated with Brugada syndrome. Alternatively spliced variants encoding different isoforms have been described. [provided by RefSeq, Feb 2013]
Synonyms:	CACNLB2; CAVB2; MYSB



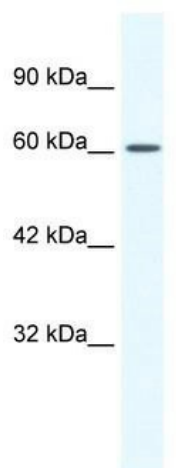
[View online »](#)

Note: Immunogen Sequence Homology: Human: 100%; Rat: 93%; Mouse: 93%; Rabbit: 93%; Pig: 86%; Bovine: 86%; Guinea pig: 86%; Horse: 79%

Protein Families: Druggable Genome, Ion Channels: Other

Protein Pathways: Arrhythmogenic right ventricular cardiomyopathy (ARVC), Cardiac muscle contraction, Dilated cardiomyopathy, Hypertrophic cardiomyopathy (HCM), MAPK signaling pathway

Product images:



WB Suggested Anti-CACNB2 Antibody Titration: 1.25 ug/ml; ELISA Titer: 1:12500; Positive Control: Raji cell lysate CACNB2 is strongly supported by BioGPS gene expression data to be expressed in Human Raji cells