

Product datasheet for TA338366

CACNG1 Rabbit Polyclonal Antibody

Product data:

Product Type:	Primary Antibodies
Applications:	WB
Recommended Dilution:	WB
Reactivity:	Rat
Host:	Rabbit
Isotype:	IgG
Clonality:	Polyclonal
Immunogen:	The immunogen for anti-Cacng1 antibody: synthetic peptide corresponding to a region of Rat. Synthetic peptide located within the following region: KNCSYFRHFNPGESSEIFEFTTQKEYSISAAAIAIFSLGFIIIGSICAFI
Formulation:	Liquid. Purified antibody supplied in 1x PBS buffer with 0.09% (w/v) sodium azide and 2% sucrose. <i>Note that this product is shipped as lyophilized powder to China customers.</i>
Purification:	Affinity Purified
Conjugation:	Unconjugated
Storage:	Store at -20°C as received.
Stability:	Stable for 12 months from date of receipt.
Predicted Protein Size:	25 kDa
Gene Name:	calcium voltage-gated channel auxiliary subunit gamma 1
Database Link:	NP_000718 Entrez Gene 29658 Rat Q06432
Background:	calcium channel subunit involved in inactivation of calcium channel current [RGD, Feb 2006]. ##Evidence-Data-START## Transcript exon combination :: Y09453.1, FQ215004.1 [ECO:0000332] RNAseq introns :: single sample supports all introns SRS369733, SRS369742 [ECO:0000348] ##Evidence-Data-END##
Synonyms:	CACNLG



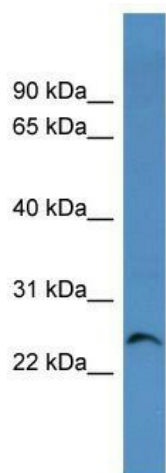
[View online »](#)

Note: Immunogen Sequence Homology: Pig: 100%; Rat: 100%; Human: 100%; Mouse: 100%; Rabbit: 100%; Guinea pig: 100%; Horse: 93%; Bovine: 93%; Dog: 86%

Protein Families: Druggable Genome, Ion Channels: Other, Transmembrane

Protein Pathways: Arrhythmogenic right ventricular cardiomyopathy (ARVC), Cardiac muscle contraction, Dilated cardiomyopathy, Hypertrophic cardiomyopathy (HCM), MAPK signaling pathway

Product images:



WB Suggested Anti-Cacng1 Antibody Titration:
0.2-1 ug/ml; ELISA Titer: 1:12500; Positive Control:
Rat Heart