

Product datasheet for **TA338363**

CHRNA5 Rabbit Polyclonal Antibody

Product data:

Product Type:	Primary Antibodies
Applications:	WB
Recommended Dilution:	WB
Reactivity:	Human
Host:	Rabbit
Isotype:	IgG
Clonality:	Polyclonal
Immunogen:	The immunogen for anti-CHRNA5 antibody: synthetic peptide directed towards the middle region of human CHRNA5. Synthetic peptide located within the following region: DGSQVDIILEDQDVKRDFFDNGEWEIVSATGSKGNRTDSCCWYPYVTYS
Formulation:	Liquid. Purified antibody supplied in 1x PBS buffer with 0.09% (w/v) sodium azide and 2% sucrose. <i>Note that this product is shipped as lyophilized powder to China customers.</i>
Purification:	Protein A purified
Conjugation:	Unconjugated
Storage:	Store at -20°C as received.
Stability:	Stable for 12 months from date of receipt.
Predicted Protein Size:	53 kDa
Gene Name:	cholinergic receptor nicotinic alpha 5 subunit
Database Link:	NP_000736 Entrez Gene 1138 Human P30532
Background:	The protein encoded by this gene is a nicotinic acetylcholine receptor subunit and a member of a superfamily of ligand-gated ion channels that mediate fast signal transmission at synapses. These receptors are thought to be heteropentamers composed of separate but similar subunits. Defects in this gene have been linked to susceptibility to lung cancer type 2 (LNCR2). [provided by RefSeq, Jun 2010]
Synonyms:	LNCR2

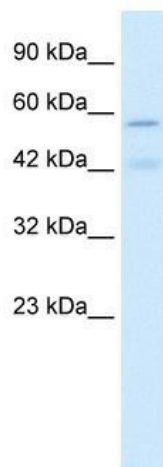


[View online »](#)

Note: Immunogen Sequence Homology: Dog: 100%; Pig: 100%; Rat: 100%; Horse: 100%; Human: 100%; Mouse: 100%; Bovine: 100%; Guinea pig: 100%; Rabbit: 93%; Zebrafish: 79%

Protein Families: Druggable Genome, Ion Channels: Cys-loop Receptors, Transmembrane

Product images:



WB Suggested Anti-CHRNA5 Antibody Titration:
1.0 ug/ml; ELISA Titer: 1:12500; Positive Control:
Jurkat cell lysate