

Product datasheet for **TA338361**

FOLR2 Rabbit Polyclonal Antibody

Product data:

Product Type:	Primary Antibodies
Applications:	WB
Recommended Dilution:	WB
Reactivity:	Human
Host:	Rabbit
Isotype:	IgG
Clonality:	Polyclonal
Immunogen:	The immunogen for anti-FOLR2 antibody is: synthetic peptide directed towards the C-terminal region of Human FOLR2. Synthetic peptide located within the following region: LCEGLWSHSYKVSNSYRSGRGIQMWFDQAQGNPNEEVARFYAAAMHVNA
Formulation:	Liquid. Purified antibody supplied in 1x PBS buffer with 0.09% (w/v) sodium azide and 2% sucrose. <i>Note that this product is shipped as lyophilized powder to China customers.</i>
Purification:	Affinity Purified
Conjugation:	Unconjugated
Storage:	Store at -20°C as received.
Stability:	Stable for 12 months from date of receipt.
Predicted Protein Size:	31 kDa
Gene Name:	folate receptor beta
Database Link:	NP_000794 Entrez Gene 2350 Human P14207



[View online »](#)

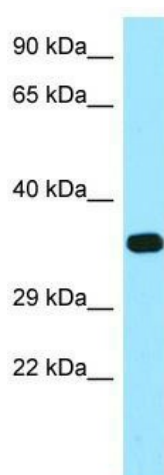
Background: The protein encoded by this gene is a member of the folate receptor (FOLR) family, and these genes exist in a cluster on chromosome 11. Members of this gene family have a high affinity for folic acid and for several reduced folic acid derivatives, and they mediate delivery of 5-methyltetrahydrofolate to the interior of cells. This protein has a 68% and 79% sequence homology with the FOLR1 and FOLR3 proteins, respectively. Although this protein was originally thought to be specific to placenta, it can also exist in other tissues, and it may play a role in the transport of methotrexate in synovial macrophages in rheumatoid arthritis patients. Multiple transcript variants that encode the same protein have been found for this gene.

Synonyms: BETA-HFR; FBP; FR-BETA; FR-P3; PL-1

Note: Immunogen Sequence Homology: Dog: 100%; Rat: 100%; Horse: 100%; Human: 100%; Mouse: 100%; Bovine: 100%; Pig: 93%; Rabbit: 93%; Guinea pig: 86%

Protein Families: Druggable Genome, Secreted Protein

Product images:



WB Suggested Anti-FOLR2 Antibody; Titration: 1.0 ug/ml; Positive Control: MCF7 Whole Cell FOLR2 is supported by BioGPS gene expression data to be expressed in MCF7