

Product datasheet for **TA338360**

GART Rabbit Polyclonal Antibody

Product data:

Product Type:	Primary Antibodies
Applications:	WB
Recommended Dilution:	WB
Reactivity:	Human
Host:	Rabbit
Isotype:	IgG
Clonality:	Polyclonal
Immunogen:	The immunogen for anti-GART antibody: synthetic peptide directed towards the middle region of human GART. Synthetic peptide located within the following region: VLKNGSLTNHFSFEKKKARVAVLISGTGSNLQALIDSTREPNSSAQIDIV
Formulation:	Liquid. Purified antibody supplied in 1x PBS buffer with 0.09% (w/v) sodium azide and 2% sucrose. <i>Note that this product is shipped as lyophilized powder to China customers.</i>
Purification:	Affinity Purified
Conjugation:	Unconjugated
Storage:	Store at -20°C as received.
Stability:	Stable for 12 months from date of receipt.
Predicted Protein Size:	108 kDa
Gene Name:	phosphoribosylglycinamide formyltransferase, phosphoribosylglycinamide synthetase, phosphoribosylaminoimidazole synthetase
Database Link:	NP_000810 Entrez Gene 2618 Human P22102
Background:	The protein encoded by this gene is a trifunctional polypeptide. It has phosphoribosylglycinamide formyltransferase, phosphoribosylglycinamide synthetase, phosphoribosylaminoimidazole synthetase activity which is required for de novo purine biosynthesis. This enzyme is highly conserved in vertebrates. Alternative splicing of this gene results in two transcript variants encoding different isoforms. [provided by RefSeq, Jul 2008]



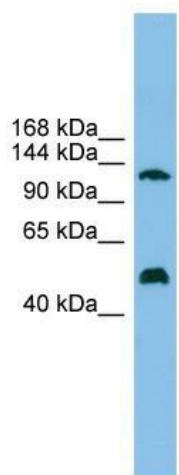
[View online »](#)

Synonyms: AIRS; GARS; GARTF; PAIS; PGFT; PRGS

Note: Immunogen Sequence Homology: Human: 100%; Horse: 83%

Protein Pathways: Metabolic pathways, One carbon pool by folate, Purine metabolism

Product images:



WB Suggested Anti-GART Antibody Titration: 0.2-1 ug/ml; ELISA Titer: 1: 12500; Positive Control: 721_B cell lysate. GART is strongly supported by BioGPS gene expression data to be expressed in Human 721_B cells