

Product datasheet for **TA338357**

Mineralocorticoid Receptor (NR3C2) Rabbit Polyclonal Antibody

Product data:

Product Type:	Primary Antibodies
Applications:	IHC, WB
Recommended Dilution:	WB, IHC
Reactivity:	Human
Host:	Rabbit
Isotype:	IgG
Clonality:	Polyclonal
Immunogen:	The immunogen for anti-NR3C2 antibody: synthetic peptide directed towards the middle region of human NR3C2. Synthetic peptide located within the following region: RRKNCPACRLQKCLQAGMNLGARKSKKLGKLGKIHEEQPQQQPPPPPPP
Formulation:	Liquid. Purified antibody supplied in 1x PBS buffer with 0.09% (w/v) sodium azide and 2% sucrose. <i>Note that this product is shipped as lyophilized powder to China customers.</i>
Purification:	Protein A purified
Conjugation:	Unconjugated
Storage:	Store at -20°C as received.
Stability:	Stable for 12 months from date of receipt.
Predicted Protein Size:	107 kDa
Gene Name:	nuclear receptor subfamily 3 group C member 2
Database Link:	NP_000892 Entrez Gene 4306 Human P08235



[View online »](#)

Background: This gene encodes the mineralocorticoid receptor, which mediates aldosterone actions on salt and water balance within restricted target cells. The protein functions as a ligand-dependent transcription factor that binds to mineralocorticoid response elements in order to transactivate target genes. Mutations in this gene cause autosomal dominant pseudohypoaldosteronism type I, a disorder characterized by urinary salt wasting. Defects in this gene are also associated with early onset hypertension with severe exacerbation in pregnancy. Alternative splicing results in multiple transcript variants. [provided by RefSeq, Oct 2009]

Synonyms: MCR; MLR; MR; NR3C2VIT

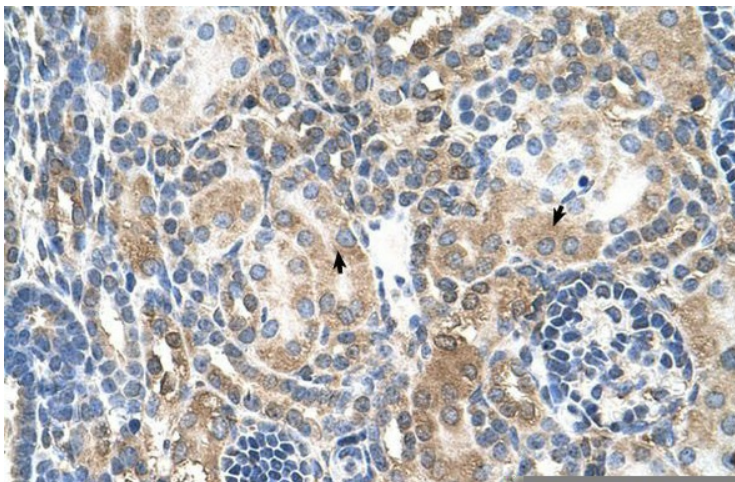
Note: Immunogen Sequence Homology: Human: 100%; Rabbit: 100%; Pig: 93%; Rat: 92%; Mouse: 92%; Horse: 86%; Bovine: 83%; Guinea pig: 75%

Protein Families: Druggable Genome, Nuclear Hormone Receptor, Transcription Factors

Product images:



WB Suggested Anti-NR3C2 Antibody Titration: 1.25 ug/ml; Positive Control: A172 cell lysate. NR3C2 is supported by BioGPS gene expression data to be expressed in A172



Human kidney