

Product datasheet for **TA338356**

Prostaglandin F2 alpha Receptor (PTGFR) Rabbit Polyclonal Antibody

Product data:

Product Type:	Primary Antibodies
Applications:	WB
Recommended Dilution:	WB
Reactivity:	Human
Host:	Rabbit
Isotype:	IgG
Clonality:	Polyclonal
Immunogen:	The immunogen for anti-PTGFR antibody is: synthetic peptide directed towards the C-terminal region of Human PTGFR. Synthetic peptide located within the following region: RFYLLLSFLGLLALGVSLLCNAITGITLLRVKFKSQQRHQRSHHLEMV
Formulation:	Liquid. Purified antibody supplied in 1x PBS buffer with 0.09% (w/v) sodium azide and 2% sucrose.
Purification:	Affinity Purified
Conjugation:	Unconjugated
Storage:	Store at -20°C as received.
Stability:	Stable for 12 months from date of receipt.
Predicted Protein Size:	37 kDa
Gene Name:	prostaglandin F receptor
Database Link:	NP_000950 Entrez Gene 5737 Human P43088
Background:	The protein encoded by this gene is member of the G-protein coupled receptor family. This protein is a receptor for prostaglandin F2-alpha (PGF2-alpha), which is known to be a potent luteolytic agent, and may also be involved in modulating intraocular pressure and smooth muscle contraction in uterus. Knockout studies in mice suggest that the interaction of PGF2-alpha with this receptor may initiate parturition in ovarian luteal cells and thus induce luteolysis. Two transcript variants encoding different isoforms have been found for this gene.
Synonyms:	FP



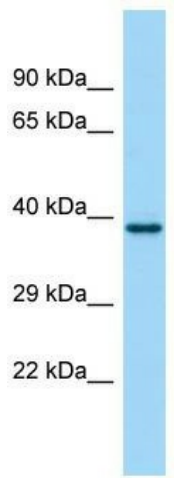
[View online »](#)

Note: Immunogen Sequence Homology: Dog: 100%; Pig: 100%; Human: 100%; Mouse: 100%; Rabbit: 100%; Rat: 93%; Horse: 93%; Sheep: 92%; Bovine: 92%; Guinea pig: 86%

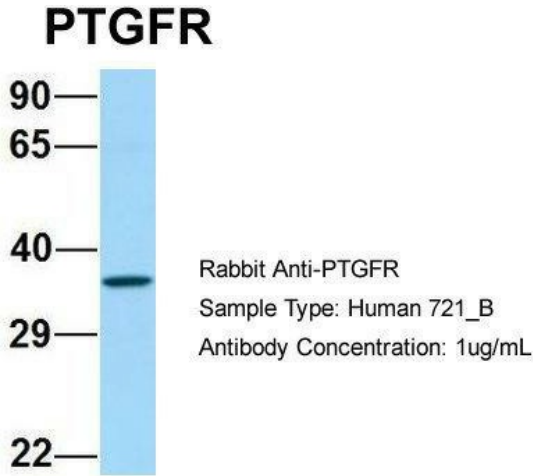
Protein Families: Druggable Genome, GPCR, Transmembrane

Protein Pathways: Calcium signaling pathway, Neuroactive ligand-receptor interaction

Product images:



WB Suggested Anti-PTGFR Antibody; Titration: 1.0 ug/ml; Positive Control: Fetal kidney



Host: Rabbit; Target Name: PTGFR; Sample Tissue: Human 721_B; Antibody Dilution: 1.0 ug/ml PTGFR is supported by BioGPS gene expression data to be expressed in 721_B