

Product datasheet for **TA338352**

RPL36AL Rabbit Polyclonal Antibody

Product data:

Product Type:	Primary Antibodies
Applications:	WB
Recommended Dilution:	WB
Reactivity:	Human
Host:	Rabbit
Isotype:	IgG
Clonality:	Polyclonal
Immunogen:	The immunogen for anti-RPL36AL antibody is: synthetic peptide directed towards the C-terminal region of Human RPL36AL. Synthetic peptide located within the following region: FRKKAKTTKKIVLRLECVENCRSKRMLAIKRCKHFELGGDKKRKGQVIQ
Formulation:	Liquid. Purified antibody supplied in 1x PBS buffer with 0.09% (w/v) sodium azide and 2% sucrose. <i>Note that this product is shipped as lyophilized powder to China customers.</i>
Purification:	Affinity Purified
Conjugation:	Unconjugated
Storage:	Store at -20°C as received.
Stability:	Stable for 12 months from date of receipt.
Predicted Protein Size:	12 kDa
Gene Name:	ribosomal protein L36a like
Database Link:	NP_000992 Entrez Gene 6166 Human Q969Q0



[View online »](#)

Background:

Cytoplasmic ribosomes, organelles that catalyze protein synthesis, consist of a small 40S subunit and a large 60S subunit. Together these subunits are composed of 4 RNA species and approximately 80 structurally distinct proteins. This gene encodes a ribosomal protein that is a component of the 60S subunit. The protein, which shares sequence similarity with yeast ribosomal protein L44, belongs to the L44E (L36AE) family of ribosomal proteins. This gene and the human gene officially named ribosomal protein L36a (RPL36A) encode nearly identical proteins; however, they are distinct genes. Although the name of this gene has been referred to as ribosomal protein L36a (RPL36A), its official name is ribosomal protein L36a-like (RPL36AL). As is typical for genes encoding ribosomal proteins, there are multiple processed pseudogenes of this gene dispersed through the genome.

Synonyms:

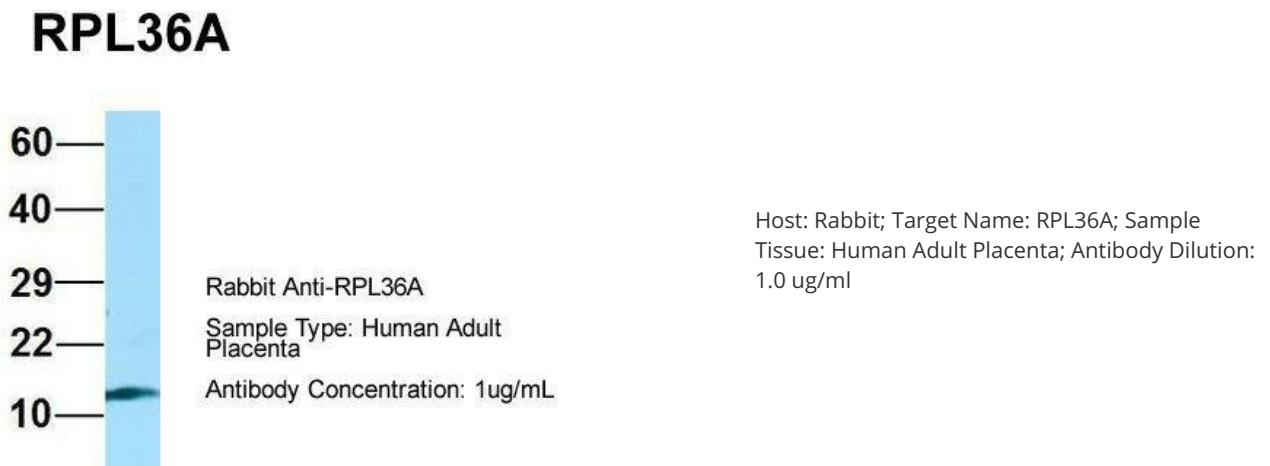
RPL36A

Note:

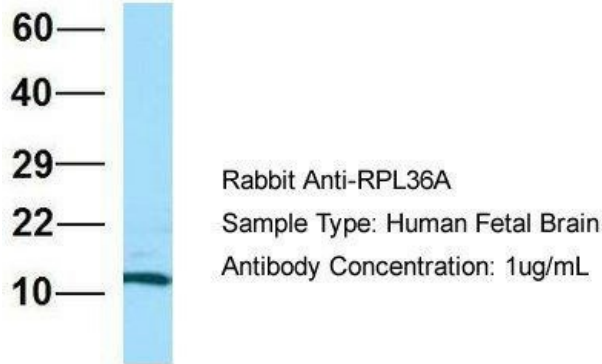
Immunogen Sequence Homology: Dog: 100%; Pig: 100%; Rat: 100%; Horse: 100%; Human: 100%; Mouse: 100%; Bovine: 100%; Rabbit: 100%; Zebrafish: 100%; Guinea pig: 100%; Yeast: 92%

Protein Pathways:

Ribosome

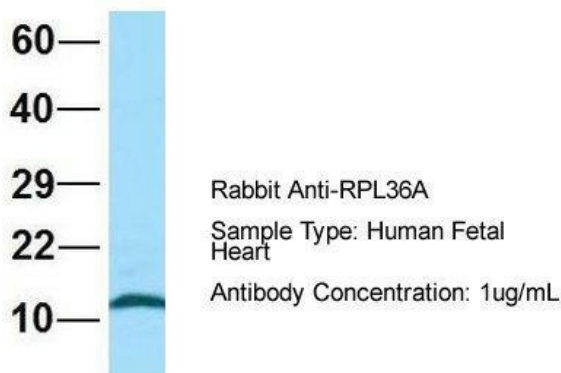
Product images:

RPL36A



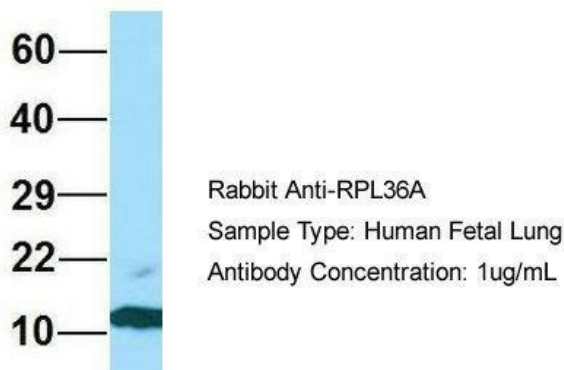
Host: Rabbit; Target Name: RPL36A; Sample Tissue: Human Fetal Brain; Antibody Dilution: 1.0 µg/ml

RPL36A



Host: Rabbit; Target Name: RPL36A; Sample Tissue: Human Fetal Heart; Antibody Dilution: 1.0 µg/ml

RPL36A



Host: Rabbit; Target Name: RPL36A; Sample Tissue: Human Fetal Lung; Antibody Dilution: 1.0 µg/ml



WB Suggested Anti-RPL36AL Antibody; Titration: 1.0 ug/ml; Positive Control: Jurkat Whole Cell RPL36AL is supported by BioGPS gene expression data to be expressed in Jurkat

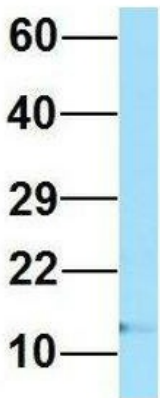
RPL36A



Rabbit Anti-RPL36A
Sample Type: Human 721_B
Antibody Concentration: 1ug/mL

Host: Rabbit; Target Name: RPL36A; Sample Tissue: Human 721_B; Antibody Dilution: 1.0 ug/ml RPL36AL is supported by BioGPS gene expression data to be expressed in 721_B

RPL36A



Rabbit Anti-RPL36A
Sample Type: Human 293T
Antibody Concentration: 1ug/mL

Host: Rabbit; Target Name: RPL36A; Sample Tissue: Human 293T; Antibody Dilution: 1.0 ug/ml RPL36AL is supported by BioGPS gene expression data to be expressed in HEK293T