

## Product datasheet for **TA338351**

### ROR gamma (RORC) Rabbit Polyclonal Antibody

#### Product data:

Product Type:	Primary Antibodies
Applications:	WB
Recommended Dilution:	WB, IHC
Reactivity:	Human
Host:	Rabbit
Isotype:	IgG
Clonality:	Polyclonal
Immunogen:	The immunogen for anti-RORC antibody: synthetic peptide directed towards the N terminal of human RORC. Synthetic peptide located within the following region: EPVKTPPAGAQGADTLTYTLGLPDGQLPLGSSPDLPEASACPPGLLKAS
Formulation:	Liquid. Purified antibody supplied in 1x PBS buffer with 0.09% (w/v) sodium azide and 2% sucrose. <i>Note that this product is shipped as lyophilized powder to China customers.</i>
Purification:	Affinity Purified
Conjugation:	Unconjugated
Storage:	Store at -20°C as received.
Stability:	Stable for 12 months from date of receipt.
Predicted Protein Size:	56 kDa
Gene Name:	RAR related orphan receptor C
Database Link:	<a href="#">NP_001001523</a> <a href="#">Entrez Gene 6097 Human</a> <a href="#">P51449</a>



[View online »](#)

**Background:**

The protein encoded by this gene is a DNA-binding transcription factor and is a member of the NR1 subfamily of nuclear hormone receptors. The specific functions of this protein are not known; however, studies of a similar gene in mice have shown that this gene may be essential for lymphoid organogenesis and may play an important regulatory role in thymopoiesis. In addition, studies in mice suggest that the protein encoded by this gene may inhibit the expression of Fas ligand and IL2. Two transcript variants encoding different isoforms have been found for this gene. [provided by RefSeq, Jul 2008]

**Synonyms:**

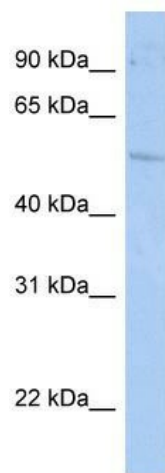
IMD42; NR1F3; RORG; RZR-GAMMA; RZRG; TOR

**Note:**

Immunogen Sequence Homology: Pig: 100%; Rat: 100%; Horse: 100%; Human: 100%; Bovine: 100%; Guinea pig: 100%; Dog: 93%; Mouse: 93%; Rabbit: 93%

**Protein Families:**

Druggable Genome, Transcription Factors

**Product images:**

WB Suggested Anti-RORC Antibody Titration: 1 ug/ml; Positive Control: HepG2 cell lysate