

## Product datasheet for TA338350

### RAET1G Rabbit Polyclonal Antibody

#### Product data:

Product Type:	Primary Antibodies
Applications:	WB
Recommended Dilution:	WB
Reactivity:	Human
Host:	Rabbit
Isotype:	IgG
Clonality:	Polyclonal
Immunogen:	The immunogen for anti-RAET1G antibody is: synthetic peptide directed towards the middle region of Human RAET1G. Synthetic peptide located within the following region: HPGARKMKEKWENDKDMTMSFHYSMGDCTGWLEDFLMGMDSTLEPSAGA
Formulation:	Liquid. Purified antibody supplied in 1x PBS buffer with 0.09% (w/v) sodium azide and 2% sucrose. <i>Note that this product is shipped as lyophilized powder to China customers.</i>
Purification:	Affinity Purified
Conjugation:	Unconjugated
Storage:	Store at -20°C as received.
Stability:	Stable for 12 months from date of receipt.
Predicted Protein Size:	34 kDa
Gene Name:	retinoic acid early transcript 1G
Database Link:	<a href="#">NP_001001788</a> <a href="#">Entrez Gene 353091 Human</a> <a href="#">Q6H3X3</a>
Background:	Members of the RAET1 family, such as RAET1G, are major histocompatibility complex (MHC) class I-related genes located within a 180-kb cluster on chromosome 6q24.2-q25.3. RAET1 proteins contain MHC class I-like alpha-1 and alpha-2 domains. RAET1E and RAET1G differ from the other RAET1 proteins in that they have type I membrane-spanning sequences at their C termini rather than glycosylphosphatidylinositol anchor sequences.
Synonyms:	ULBP5



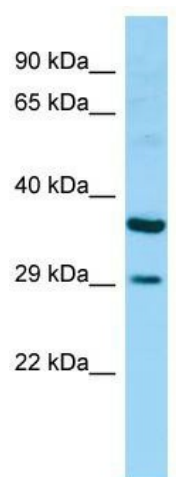
[View online »](#)

**Note:** Immunogen Sequence Homology: Human: 100%; Bovine: 100%; Pig: 80%

**Protein Families:** Druggable Genome

**Protein Pathways:** Natural killer cell mediated cytotoxicity

**Product images:**



WB Suggested Anti-RAET1G Antibody; Titration:  
1.0 ug/ml; Positive Control: Fetal Heart