

## Product datasheet for **TA338346**

### Daam2 Rabbit Polyclonal Antibody

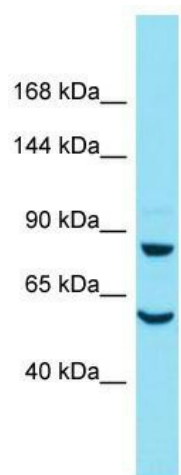
#### Product data:

Product Type:	Primary Antibodies
Applications:	WB
Recommended Dilution:	WB
Reactivity:	Mouse
Host:	Rabbit
Isotype:	IgG
Clonality:	Polyclonal
Immunogen:	The immunogen for anti-Daam2 antibody is: synthetic peptide directed towards the N-terminal region of Mouse Daam2. Synthetic peptide located within the following region: RFAELVDELDTDKNREAVFALPPEKKWQIYCKRKEQEDPNKLATSWP
Formulation:	Liquid. Purified antibody supplied in 1x PBS buffer with 0.09% (w/v) sodium azide and 2% sucrose.
Purification:	Affinity Purified
Conjugation:	Unconjugated
Storage:	Store at -20°C as received.
Stability:	Stable for 12 months from date of receipt.
Predicted Protein Size:	57 kDa
Gene Name:	dishevelled associated activator of morphogenesis 2
Database Link:	<a href="#">NP_001008232</a> <a href="#">Entrez Gene 76441 Mouse</a> <a href="#">Q80U19</a>
Background:	The function of this protein remains unknown.
Synonyms:	dj90A20A.1; KIAA0381; MGC90515
Note:	Immunogen Sequence Homology: Dog: 100%; Pig: 100%; Rat: 100%; Horse: 100%; Human: 100%; Bovine: 100%; Rabbit: 100%; Zebrafish: 100%; Guinea pig: 100%; Mouse: 93%



[View online »](#)

## Product images:



Host: Rabbit; Target Name: Daam2; Sample  
Tissue: Mouse Heart lysates; Antibody Dilution:  
1.0 ug/ml