

## Product datasheet for **TA338345**

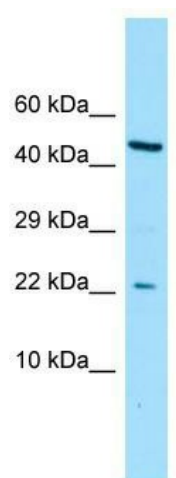
### CGGBP1 Rabbit Polyclonal Antibody

#### Product data:

Product Type:	Primary Antibodies
Applications:	WB
Recommended Dilution:	WB
Reactivity:	Human
Host:	Rabbit
Isotype:	IgG
Clonality:	Polyclonal
Immunogen:	The immunogen for anti-CGGBP1 antibody is: synthetic peptide directed towards the N-terminal region of Human CGGBP1. Synthetic peptide located within the following region: GGKLFCTSCNVVLNHVRKSAISDHLKSKTHTKRKAEFEEQNVRKKQRPLT
Formulation:	Liquid. Purified antibody supplied in 1x PBS buffer with 0.09% (w/v) sodium azide and 2% sucrose. <i>Note that this product is shipped as lyophilized powder to China customers.</i>
Purification:	Affinity Purified
Conjugation:	Unconjugated
Storage:	Store at -20°C as received.
Stability:	Stable for 12 months from date of receipt.
Predicted Protein Size:	19 kDa
Gene Name:	CGG triplet repeat binding protein 1
Database Link:	<a href="#">NP_001008391</a> <a href="#">Entrez Gene 8545 Human</a> <a href="#">Q9UFW8</a>
Background:	CGGBP1 influences expression of the FMR1 gene, which is associated with the fragile X mental retardation syndrome, by specifically interacting with the 5-prime (CGG) <sub>n</sub> -3-prime repeat in its 5-prime UTR.
Synonyms:	CGGBP; p20-CGGBP
Note:	Immunogen Sequence Homology: Dog: 100%; Pig: 100%; Rat: 100%; Horse: 100%; Human: 100%; Mouse: 100%; Bovine: 100%; Rabbit: 100%; Guinea pig: 100%



[View online »](#)

**Product images:**

WB Suggested Anti-CGGBP1 Antibody; Titration:  
1.0 ug/ml; Positive Control: ACHN Whole Cell