

Product datasheet for **TA338344**

LPHN1 (ADGRL1) Rabbit Polyclonal Antibody

Product data:

Product Type:	Primary Antibodies
Applications:	WB
Recommended Dilution:	WB
Reactivity:	Human
Host:	Rabbit
Isotype:	IgG
Clonality:	Polyclonal
Immunogen:	The immunogen for anti-LPHN1 antibody is: synthetic peptide directed towards the C-terminal region of Human LPHN1. Synthetic peptide located within the following region: YSLRSGDFPPGDGGPEPPRGRNLADAAAFEKMIISELVHNNLRGSSSAK
Formulation:	Liquid. Purified antibody supplied in 1x PBS buffer with 0.09% (w/v) sodium azide and 2% sucrose. <i>Note that this product is shipped as lyophilized powder to China customers.</i>
Purification:	Affinity Purified
Conjugation:	Unconjugated
Storage:	Store at -20°C as received.
Stability:	Stable for 12 months from date of receipt.
Predicted Protein Size:	95 kDa
Gene Name:	adhesion G protein-coupled receptor L1
Database Link:	NP_001008701 Entrez Gene 22859 Human O94910



[View online »](#)

Background:

This gene encodes a member of the latrophilin subfamily of G-protein coupled receptors (GPCR). Latrophilins may function in both cell adhesion and signal transduction. In experiments with non-human species, endogenous proteolytic cleavage within a cysteine-rich GPS (G-protein-coupled-receptor proteolysis site) domain resulted in two subunits (a large extracellular N-terminal cell adhesion subunit and a subunit with substantial similarity to the secretin/calcitonin family of GPCRs) being non-covalently bound at the cell membrane. Latrophilin-1 has been shown to recruit the neurotoxin from black widow spider venom, alpha-latrotoxin, to the synapse plasma membrane.

Synonyms:

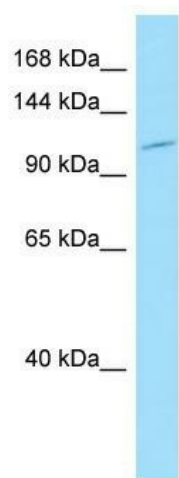
CIRL1; CL1; LEC2; LPHN1

Note:

Immunogen Sequence Homology: Pig: 100%; Rat: 100%; Human: 100%; Mouse: 100%; Guinea pig: 100%; Horse: 93%; Bovine: 93%; Dog: 86%

Protein Families:

Druggable Genome, Transmembrane

Product images:

WB Suggested Anti-LPHN1 Antibody; Titration: 1.0 ug/ml; Positive Control: Hela Whole Cell