

## Product datasheet for **TA338343**

### BRD9 Rabbit Polyclonal Antibody

#### Product data:

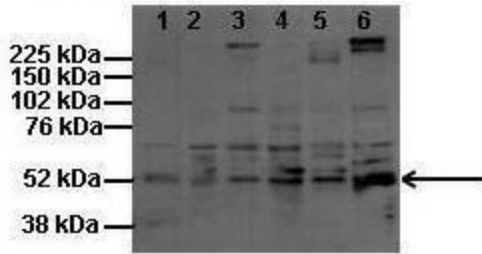
Product Type:	Primary Antibodies
Applications:	WB
Recommended Dilution:	WB
Reactivity:	Human, Rat, Mouse
Host:	Rabbit
Isotype:	IgG
Clonality:	Polyclonal
Immunogen:	The immunogen for anti-BRD9 antibody: synthetic peptide directed towards the N terminal of human BRD9. Synthetic peptide located within the following region: VTEFKADFKLMCDNAMTYNRPDTVYYKLAKKILHAGFKMMSKQAALLGNE
Formulation:	Liquid. Purified antibody supplied in 1x PBS buffer with 0.09% (w/v) sodium azide and 2% sucrose. <i>Note that this product is shipped as lyophilized powder to China customers.</i>
Purification:	Protein A purified
Conjugation:	Unconjugated
Storage:	Store at -20°C as received.
Stability:	Stable for 12 months from date of receipt.
Predicted Protein Size:	53 kDa
Gene Name:	bromodomain containing 9
Database Link:	<a href="#">NP_001009877</a> <a href="#">Entrez Gene 105246 MouseEntrez Gene 308067 RatEntrez Gene 65980 Human Q9H8M2</a>
Background:	BRD9 is a member of protein family that contains bromodomain. It is potentially related to cancer.
Synonyms:	LAVS3040; PRO9856
Note:	Immunogen Sequence Homology: Dog: 100%; Pig: 100%; Rat: 100%; Human: 100%; Mouse: 100%; Bovine: 100%; Rabbit: 100%; Guinea pig: 100%; Horse: 92%; Zebrafish: 77%



[View online »](#)

Product images:

Brd9



Lanes: 1: 60ug mouse melanocytes (melba), 2: 60ug mouse melanoma (B16), 3: 60ug human melanocytes (HFSC), 4: 60ug human melanoma (SK-MEL5), 5: 60ug human melanoma (YUMAC), 6: 60ug rat shwann cell; Primary Antibody Dilution: ; 1:200; Secondary Antibody: ;



WB Suggested Anti-BRD9 Antibody Titration: 2.5 ug/ml; ELISA Titer: 1:62500; Positive Control: Jurkat cell lysate BRD9 is supported by BioGPS gene expression data to be expressed in Jurkat