

Product datasheet for **TA338342**

ASAH3L (ACER2) Rabbit Polyclonal Antibody

Product data:

| | |
|-------------------------|---|
| Product Type: | Primary Antibodies |
| Applications: | WB |
| Recommended Dilution: | WB |
| Reactivity: | Human |
| Host: | Rabbit |
| Isotype: | IgG |
| Clonality: | Polyclonal |
| Immunogen: | The immunogen for anti-ACER2 antibody is: synthetic peptide directed towards the middle region of Human ACER2. Synthetic peptide located within the following region: DELAVLWVLMCALAMWFPRRYLPKIFRNDRGRFKVVVSVLSAVTTCLAFV |
| Formulation: | Liquid. Purified antibody supplied in 1x PBS buffer with 0.09% (w/v) sodium azide and 2% sucrose. <i>Note that this product is shipped as lyophilized powder to China customers.</i> |
| Purification: | Affinity Purified |
| Conjugation: | Unconjugated |
| Storage: | Store at -20°C as received. |
| Stability: | Stable for 12 months from date of receipt. |
| Predicted Protein Size: | 31 kDa |
| Gene Name: | alkaline ceramidase 2 |
| Database Link: | NP_001010887 Entrez Gene 340485 Human Q5QJU3 |
| Background: | The sphingolipid metabolite sphingosine-1-phosphate promotes cell proliferation and survival, whereas its precursor, sphingosine, has the opposite effect. The ceramidase ACER2 hydrolyzes very long chain ceramides to generate sphingosine. |
| Synonyms: | ALKCDase2; ASAH3L |
| Note: | Immunogen Sequence Homology: Pig: 100%; Rat: 100%; Horse: 100%; Human: 100%; Mouse: 100%; Bovine: 100%; Rabbit: 100%; Guinea pig: 100%; Dog: 93%; Zebrafish: 86% |

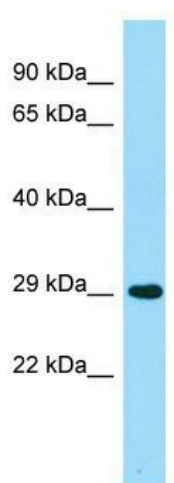


[View online »](#)

Protein Families: Transmembrane

Protein Pathways: Metabolic pathways, Sphingolipid metabolism

Product images:



WB Suggested Anti-ACER2 Antibody; Titration: 1.0 ug/ml; Positive Control: Fetal Lung