

## Product datasheet for TA338341

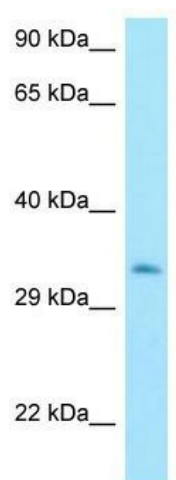
### MTX3 Rabbit Polyclonal Antibody

#### Product data:

Product Type:	Primary Antibodies
Applications:	WB
Recommended Dilution:	WB
Reactivity:	Human
Host:	Rabbit
Isotype:	IgG
Clonality:	Polyclonal
Immunogen:	The immunogen for anti-MTX3 antibody is: synthetic peptide directed towards the C-terminal region of Human MTX3. Synthetic peptide located within the following region: NRNQQIDFGISPAGQETVDANLQKLTQLVNKESNLIEKMDDNLRQSPQL
Formulation:	Liquid. Purified antibody supplied in 1x PBS buffer with 0.09% (w/v) sodium azide and 2% sucrose.
Purification:	Affinity Purified
Conjugation:	Unconjugated
Storage:	Store at -20°C as received.
Stability:	Stable for 12 months from date of receipt.
Predicted Protein Size:	35 kDa
Gene Name:	metaxin 3
Database Link:	<a href="#">NP_001010891</a> <a href="#">Entrez Gene 345778 Human</a> <a href="#">Q5HYI7</a>
Background:	The function of this protein remains unknown.
Synonyms:	DKFZp686O1788
Note:	Immunogen Sequence Homology: Dog: 100%; Pig: 100%; Horse: 100%; Human: 100%; Bovine: 100%; Guinea pig: 100%; Rat: 93%; Mouse: 93%; Zebrafish: 93%


[View online »](#)

## Product images:



WB Suggested Anti-MTX3 Antibody; Titration: 1.0 ug/ml; Positive Control: MCF7 Whole Cell