

Product datasheet for **TA338340**

SPRN Rabbit Polyclonal Antibody

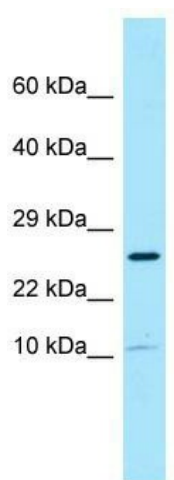
Product data:

Product Type:	Primary Antibodies
Applications:	WB
Recommended Dilution:	WB
Reactivity:	Human
Host:	Rabbit
Isotype:	IgG
Clonality:	Polyclonal
Immunogen:	The immunogen for anti-SPRN antibody is: synthetic peptide directed towards the N-terminal region of Human SPRN. Synthetic peptide located within the following region: LLAAFLCDSGAAKGGRGGARGSGRGGARGASRVVRPAQRYGAPG
Formulation:	Liquid. Purified antibody supplied in 1x PBS buffer with 0.09% (w/v) sodium azide and 2% sucrose.
Purification:	Affinity Purified
Conjugation:	Unconjugated
Storage:	Store at -20°C as received.
Stability:	Stable for 12 months from date of receipt.
Predicted Protein Size:	10 kDa
Gene Name:	shadow of prion protein homolog (zebrafish)
Database Link:	NP_001012526 Entrez Gene 503542 Human Q5BIV9
Background:	SPRN is a prion-like protein that has PrP(C)-like neuroprotective activity. SPRN may act as a modulator for the biological actions of normal and abnormal PrP.
Synonyms:	bA108K14.1; SHADOO; SHO
Note:	Immunogen Sequence Homology: Goat: 100%; Human: 100%; Dog: 93%; Sheep: 93%; Rabbit: 93%; Pig: 86%; Rat: 86%; Mouse: 86%; Bovine: 86%; Guinea pig: 86%



[View online »](#)

Product images:



WB Suggested Anti-SPRN Antibody; Titration: 1.0 ug/ml; Positive Control: ACHN Whole Cell