

Product datasheet for TA338339

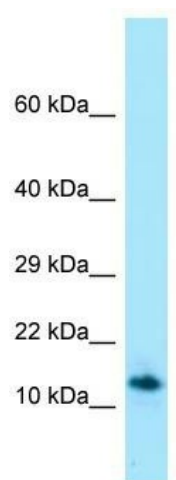
SPRN Rabbit Polyclonal Antibody

Product data:

Product Type:	Primary Antibodies
Applications:	WB
Recommended Dilution:	WB
Reactivity:	Human
Host:	Rabbit
Isotype:	IgG
Clonality:	Polyclonal
Immunogen:	The immunogen for anti-SPRN antibody is: synthetic peptide directed towards the C-terminal region of Human SPRN. Synthetic peptide located within the following region: AAAGLAAGSGWRRRAAGPGERGLEDEEDGVPGGNGTGPGIYSYRAWTSGAG
Formulation:	Liquid. Purified antibody supplied in 1x PBS buffer with 0.09% (w/v) sodium azide and 2% sucrose.
Purification:	Affinity Purified
Conjugation:	Unconjugated
Storage:	Store at -20°C as received.
Stability:	Stable for 12 months from date of receipt.
Predicted Protein Size:	10 kDa
Gene Name:	shadow of prion protein homolog (zebrafish)
Database Link:	NP_001012526 Entrez Gene 503542 Human Q5BIV9
Background:	SPRN is a prion-like protein that has PrP(C)-like neuroprotective activity. SPRN may act as a modulator for the biological actions of normal and abnormal PrP.
Synonyms:	bA108K14.1; SHADOO; SHO
Note:	Immunogen Sequence Homology: Human: 100%


[View online »](#)

Product images:



Host: Rabbit; Target Name: SPRN; Sample Tissue: HT1080 Whole Cell lysates; Antibody Dilution: 1.0 ug/ml