

Product datasheet for TA338337

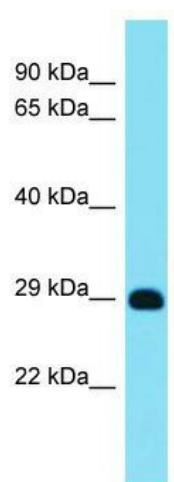
Mrpl12 Rabbit Polyclonal Antibody

Product data:

Product Type:	Primary Antibodies
Applications:	WB
Recommended Dilution:	WB
Reactivity:	Rat
Host:	Rabbit
Isotype:	IgG
Clonality:	Polyclonal
Immunogen:	The immunogen for anti-Mrpl12 antibody is: synthetic peptide directed towards the middle region of Rat Mrpl12. Synthetic peptide located within the following region: RRSEALAGAPLDNAPKEYPPKIQQLVQDIASLTLEISDLNELLKKTLLKI
Formulation:	Liquid. Purified antibody supplied in 1x PBS buffer with 0.09% (w/v) sodium azide and 2% sucrose.
Purification:	Affinity Purified
Conjugation:	Unconjugated
Storage:	Store at -20°C as received.
Stability:	Stable for 12 months from date of receipt.
Predicted Protein Size:	29 kDa
Gene Name:	mitochondrial ribosomal protein L12
Database Link:	NP_001025071 Entrez Gene 303746 Rat
Background:	Mrpl12 is a mitochondrial ribosomal protein.
Synonyms:	5c5-2; FLJ60124; L12mt; MGC8610; MRP-L12; MRP-L31/34; MRPL7; MRPL7/L12; RPML12
Note:	Immunogen Sequence Homology: Dog: 100%; Pig: 100%; Rat: 100%; Horse: 100%; Human: 100%; Mouse: 100%; Bovine: 100%; Guinea pig: 100%; Zebrafish: 79%


[View online »](#)

Product images:



Host: Rabbit; Target Name: Mrpl12; Sample
Tissue: Rat Lung lysates; Antibody Dilution: 1.0
ug/ml