

Product datasheet for **TA338333**

Oprm1 Rabbit Polyclonal Antibody

Product data:

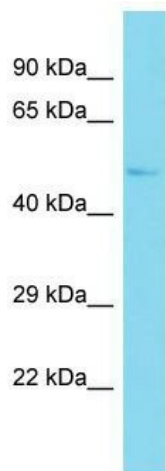
Product Type:	Primary Antibodies
Applications:	WB
Recommended Dilution:	WB
Reactivity:	Mouse
Host:	Rabbit
Isotype:	IgG
Clonality:	Polyclonal
Immunogen:	The immunogen for anti-Oprm1 antibody is: synthetic peptide directed towards the middle region of Mouse Oprm1. Synthetic peptide located within the following region: CYGLMILRLKSVRMLSGSKEKDRNLRRITRMVLVVAVFIVCWTPIHIV
Formulation:	Liquid. Purified antibody supplied in 1x PBS buffer with 0.09% (w/v) sodium azide and 2% sucrose. <i>Note that this product is shipped as lyophilized powder to China customers.</i>
Purification:	Affinity Purified
Conjugation:	Unconjugated
Storage:	Store at -20°C as received.
Stability:	Stable for 12 months from date of receipt.
Predicted Protein Size:	48 kDa
Gene Name:	opioid receptor, mu 1
Database Link:	NP_001034741 Entrez Gene 18390 Mouse P42866
Background:	This gene encodes the mu opioid receptor which is where drugs such as morphine and other opioids have pharmacological effects. Alternatively spliced transcript variants have been found for this gene, however, many of these variants may be NMD candidates.
Synonyms:	hMOP; KIAA0403; LMOR; MOP; MOR; MOR-1; MOR1; OPRM



[View online »](#)

Note: Immunogen Sequence Homology: Dog: 100%; Pig: 100%; Rat: 100%; Horse: 100%; Human: 100%; Mouse: 100%; Bovine: 100%; Guinea pig: 100%; Goat: 93%; Sheep: 93%; Rabbit: 93%; Zebrafish: 93%

Product images:



Host: Rabbit; Target Name: Oprm1; Sample Tissue: Mouse Brain lysates; Antibody Dilution: 1.0 ug/ml