

Product datasheet for **TA338332**

CBLN3 Rabbit Polyclonal Antibody

Product data:

Product Type:	Primary Antibodies
Applications:	WB
Recommended Dilution:	WB
Reactivity:	Human
Host:	Rabbit
Isotype:	IgG
Clonality:	Polyclonal
Immunogen:	The immunogen for anti-CBLN3 antibody is: synthetic peptide directed towards the N-terminal region of Human CBLN3. Synthetic peptide located within the following region: VCEPGRAAAGGPGGAALGEAPPGRVAFAAVRSHHHEPAGETGNGTSGAIY
Formulation:	Liquid. Purified antibody supplied in 1x PBS buffer with 0.09% (w/v) sodium azide and 2% sucrose. <i>Note that this product is shipped as lyophilized powder to China customers.</i>
Purification:	Affinity Purified
Conjugation:	Unconjugated
Storage:	Store at -20°C as received.
Stability:	Stable for 12 months from date of receipt.
Predicted Protein Size:	18 kDa
Gene Name:	cerebellin 3 precursor
Database Link:	NP_001034860 Entrez Gene 643866 Human Q6UW01
Background:	Members of the precerebellin family, such as CBLN3, contain a cerebellin motif and a C-terminal C1q signature domain that mediates trimeric assembly of atypical collagen complexes. However, precerebellins do not contain a collagen motif, suggesting that they are not conventional components of the extracellular matrix.
Synonyms:	PRO1486

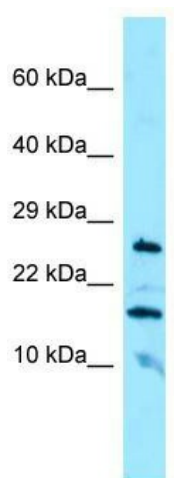


[View online »](#)

Note: Immunogen Sequence Homology: Rat: 100%; Human: 100%; Mouse: 100%; Bovine: 93%; Rabbit: 93%; Dog: 86%; Pig: 86%; Horse: 86%; Guinea pig: 86%

Protein Families: Secreted Protein

Product images:



WB Suggested Anti-CBLN3 Antibody; Titration: 1.0 ug/ml; Positive Control: HepG2 Whole Cell