

## Product datasheet for **TA338331**

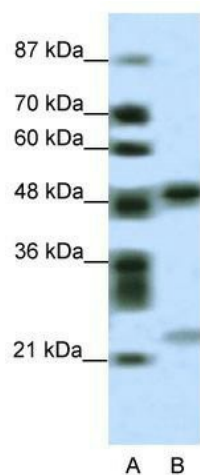
### PHF11 Rabbit Polyclonal Antibody

#### Product data:

Product Type:	Primary Antibodies
Applications:	WB
Recommended Dilution:	WB
Reactivity:	Human
Host:	Rabbit
Isotype:	IgG
Clonality:	Polyclonal
Immunogen:	The immunogen for anti-PHF11 antibody: synthetic peptide directed towards the middle region of human PHF11. Synthetic peptide located within the following region: FSGVKKRGRKKPLSGNHVQPETMKCNTFIRQVKEEHGRHTDATVKVPF
Formulation:	Liquid. Purified antibody supplied in 1x PBS buffer with 0.09% (w/v) sodium azide and 2% sucrose. <i>Note that this product is shipped as lyophilized powder to China customers.</i>
Purification:	Affinity Purified
Conjugation:	Unconjugated
Storage:	Store at -20°C as received.
Stability:	Stable for 12 months from date of receipt.
Predicted Protein Size:	37 kDa
Gene Name:	PHD finger protein 11
Database Link:	<a href="#">NP_001035533</a> <a href="#">Entrez Gene 51131 Human</a> <a href="#">Q9UIL8</a>
Background:	PHF11 contains two PHD zinc fingers and probably regulates transcription. Distinctive splice variants were expressed in immune tissues and cells.
Synonyms:	APY; BCAP; IGEL; IGER; IGHER; NY-REN-34; NYREN34
Note:	Immunogen Sequence Homology: Human: 100%; Dog: 85%
Protein Families:	Druggable Genome, Transcription Factors



[View online »](#)

**Product images:**

WB Suggested Anti-PHF11 Antibody Titration: 0.2-1 ug/ml; ELISA Titer: 1:62500; Positive Control: HepG2 cell lysate PHF11 is supported by BioGPS gene expression data to be expressed in HepG2