

## Product datasheet for **TA338330**

### LTBP4 Rabbit Polyclonal Antibody

#### Product data:

Product Type:	Primary Antibodies
Applications:	WB
Recommended Dilution:	WB
Reactivity:	Human
Host:	Rabbit
Isotype:	IgG
Clonality:	Polyclonal
Immunogen:	The immunogen for anti-LTBP4 antibody is: synthetic peptide directed towards the C-terminal region of Human LTBP4. Synthetic peptide located within the following region: GGPYGESEAPAPPGPGTRWPYRSRDTRRSFPEPEEPPEGGSYAGSLAEPY
Formulation:	Liquid. Purified antibody supplied in 1x PBS buffer with 0.09% (w/v) sodium azide and 2% sucrose. <i>Note that this product is shipped as lyophilized powder to China customers.</i>
Purification:	Affinity Purified
Conjugation:	Unconjugated
Storage:	Store at -20°C as received.
Stability:	Stable for 12 months from date of receipt.
Predicted Protein Size:	69 kDa
Gene Name:	latent transforming growth factor beta binding protein 4
Database Link:	<a href="#">NP_001036009</a> <a href="#">Entrez Gene 8425 Human</a> <a href="#">Q8N2S1</a>
Background:	The protein encoded by this gene binds transforming growth factor beta (TGFB) as it is secreted and targeted to the extracellular matrix. TGFB is biologically latent after secretion and insertion into the extracellular matrix, and sheds TGFB and other proteins upon activation. Defects in this gene may be a cause of cutis laxa and severe pulmonary, gastrointestinal, and urinary abnormalities. Three transcript variants encoding different isoforms have been found for this gene.



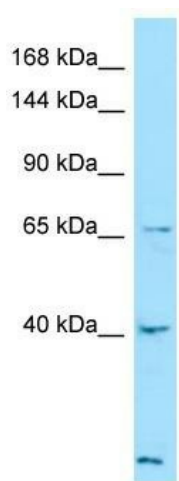
[View online »](#)

**Synonyms:** ARCL1C; LTBP-4; LTBP4L; LTBP4S

**Note:** Immunogen Sequence Homology: Human: 100%; Bovine: 93%; Dog: 86%; Horse: 86%; Rabbit: 79%

**Protein Families:** Druggable Genome

**Product images:**



Host: Rabbit; Target Name: LTBP4; Sample Tissue: ACHN Whole Cell lysates; Antibody Dilution: 1.0 ug/ml