

## Product datasheet for **TA338329**

### ENGASE Rabbit Polyclonal Antibody

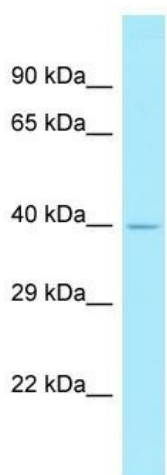
#### Product data:

Product Type:	Primary Antibodies
Applications:	WB
Recommended Dilution:	WB
Reactivity:	Human
Host:	Rabbit
Isotype:	IgG
Clonality:	Polyclonal
Immunogen:	The immunogen for anti-ENGASE antibody is: synthetic peptide directed towards the N-terminal region of Human ENGASE. Synthetic peptide located within the following region: RRRQLQGLAAPEAGTQEEQEDQEPRRRRRPGRSIKDEEEETVFREVSF
Formulation:	Liquid. Purified antibody supplied in 1x PBS buffer with 0.09% (w/v) sodium azide and 2% sucrose. <i>Note that this product is shipped as lyophilized powder to China customers.</i>
Purification:	Affinity Purified
Conjugation:	Unconjugated
Storage:	Store at -20°C as received.
Stability:	Stable for 12 months from date of receipt.
Predicted Protein Size:	41 kDa
Gene Name:	endo-beta-N-acetylglucosaminidase
Database Link:	<a href="#">NP_001036038</a> <a href="#">Entrez Gene 64772 Human</a> <a href="#">Q8NFI3</a>
Background:	This gene encodes a cytosolic enzyme which catalyzes the hydrolysis of peptides and proteins with mannose modifications to produce free oligosaccharides.
Synonyms:	DKFZp434P174; FLJ21865
Note:	Immunogen Sequence Homology: Human: 100%
Protein Pathways:	Other glycan degradation



[View online »](#)

## Product images:



Host: Rabbit  
Target Name: ENGASE  
Sample Tissue: 721\_B Cell Lysate  
Antibody Dilution: 1.0 $\mu$ g/ml

Host: Rabbit; Target Name: ENGASE; Sample  
Tissue: 721\_B Whole Cell lysates; Antibody  
Dilution: 1.0 ug/ml