

Product datasheet for **TA338325**

Pepsin (PGA4) Rabbit Polyclonal Antibody

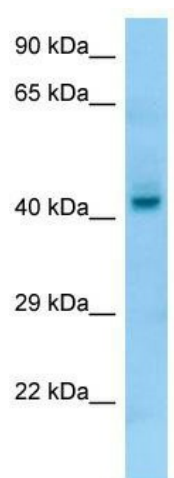
Product data:

Product Type:	Primary Antibodies
Applications:	WB
Recommended Dilution:	WB
Reactivity:	Human
Host:	Rabbit
Isotype:	IgG
Clonality:	Polyclonal
Immunogen:	The immunogen for anti-PGA4 antibody is: synthetic peptide directed towards the C-terminal region of Human PGA4. Synthetic peptide located within the following region: IACAEGCQAIVDGTGTSLLTGPTSPIANIQSDIGASENSDGDMMVSCSAIS
Formulation:	Liquid. Purified antibody supplied in 1x PBS buffer with 0.09% (w/v) sodium azide and 2% sucrose.
Purification:	Affinity Purified
Conjugation:	Unconjugated
Storage:	Store at -20°C as received.
Stability:	Stable for 12 months from date of receipt.
Predicted Protein Size:	42 kDa
Gene Name:	pepsinogen 4, group I (pepsinogen A)
Database Link:	NP_001073276 Entrez Gene 643847 Human P0DJ07
Background:	PGA4 shows particularly broad specificity; although bonds involving phenylalanine and leucine are preferred, many others are also cleaved to some extent.
Synonyms:	PGA3; PGA5
Note:	Immunogen Sequence Homology: Human: 100%; Pig: 93%; Bovine: 83%; Rabbit: 83%
Protein Families:	Druggable Genome



[View online »](#)

Product images:



WB Suggested Anti-PGA4 Antibody; Titration: 1.0 ug/ml; Positive Control: Fetal Liver