

Product datasheet for **TA338324**

GRIP2 Rabbit Polyclonal Antibody

Product data:

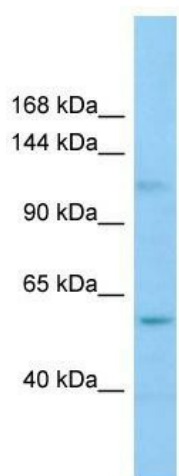
Product Type:	Primary Antibodies
Applications:	WB
Recommended Dilution:	WB
Reactivity:	Human
Host:	Rabbit
Isotype:	IgG
Clonality:	Polyclonal
Immunogen:	The immunogen for anti-GRIP2 antibody is: synthetic peptide directed towards the C-terminal region of Human GRIP2. Synthetic peptide located within the following region: IRLDNCPMEDAVQILRQCEDLVKLRKDEEDNSDELETTGAVSYTVELKR
Formulation:	Liquid. Purified antibody supplied in 1x PBS buffer with 0.09% (w/v) sodium azide and 2% sucrose. <i>Note that this product is shipped as lyophilized powder to China customers.</i>
Purification:	Affinity Purified
Conjugation:	Unconjugated
Storage:	Store at -20°C as received.
Stability:	Stable for 12 months from date of receipt.
Predicted Protein Size:	123 kDa
Gene Name:	glutamate receptor interacting protein 2
Database Link:	NP_001073892 Entrez Gene 80852 Human Q9C0E4
Background:	GRIP2 may play a role as a localized scaffold for the assembly of a multiprotein signaling complex and as mediator of the trafficking of its binding partners at specific subcellular location in neurons.
Synonyms:	glutamate receptor interacting protein 2
Note:	Immunogen Sequence Homology: Human: 100%; Dog: 93%; Pig: 93%; Horse: 93%; Bovine: 93%; Zebrafish: 93%; Rat: 92%; Mouse: 92%; Rabbit: 92%; Guinea pig: 92%



[View online »](#)

Protein Families: Druggable Genome

Product images:



WB Suggested Anti-GRIP2 Antibody; Titration: 1.0 ug/ml; Positive Control: COLO205 Whole Cell