

Product datasheet for TA338322

Eph receptor A6 (EPHA6) Rabbit Polyclonal Antibody

Product data:

Product Type:	Primary Antibodies
Applications:	WB
Recommended Dilution:	WB
Reactivity:	Human
Host:	Rabbit
Isotype:	IgG
Clonality:	Polyclonal
Immunogen:	The immunogen for anti-EPHA6 antibody is: synthetic peptide directed towards the N-terminal region of Human EPHA6. Synthetic peptide located within the following region: DTIPRVDSSSLVEVRGSCVKSAEERDTPKLYCGADGDWLVLGRICSTG
Formulation:	Liquid. Purified antibody supplied in 1x PBS buffer with 0.09% (w/v) sodium azide and 2% sucrose. <i>Note that this product is shipped as lyophilized powder to China customers.</i>
Purification:	Affinity Purified
Conjugation:	Unconjugated
Storage:	Store at -20°C as received.
Stability:	Stable for 12 months from date of receipt.
Predicted Protein Size:	126 kDa
Gene Name:	EPH receptor A6
Database Link:	NP_001073917 Entrez Gene 285220 Human Q9UF33
Background:	EPHA6 is a receptor tyrosine kinase which binds promiscuously GPI-anchored ephrin-A family ligands residing on adjacent cells, leading to contact-dependent bidirectional signaling into neighboring cells. The signaling pathway downstream of the receptor is referred to as forward signaling while the signaling pathway downstream of the ephrin ligand is referred to as reverse signaling.
Synonyms:	EHK-2; EHK2; EK12; EPA6; HEK12; PRO57066

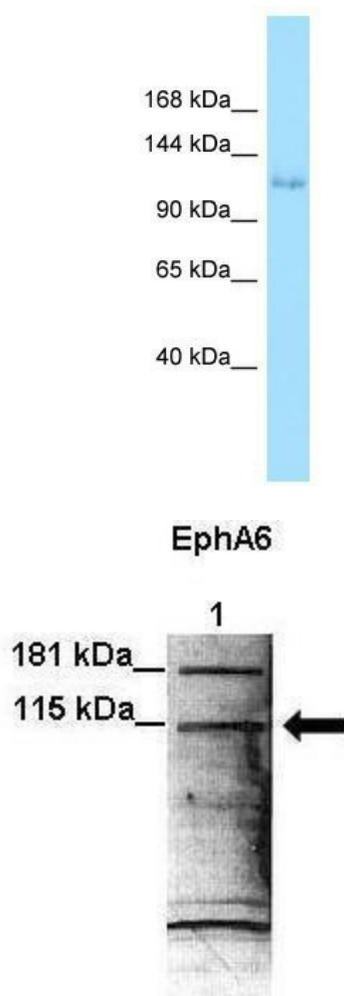

[View online »](#)

Note: Immunogen Sequence Homology: Dog: 100%; Pig: 100%; Rat: 100%; Horse: 100%; Human: 100%; Mouse: 100%; Bovine: 100%; Rabbit: 100%; Zebrafish: 100%; Guinea pig: 100%

Protein Families: Druggable Genome, Protein Kinase, Transmembrane

Protein Pathways: Axon guidance

Product images:



WB Suggested Anti-EPHA6 Antibody; Titration: 1.0 ug/ml; Positive Control: 721_B Whole Cell

Lanes: Lane 1: 35ug H4 cell lysate; Primary Antibody Dilution: 1:1000; Secondary Antibody: Anti-rabbit-HRP; Secondary Antibody Dilution: 1:5000; Gene Name: EPHA6; Submitted by: Erika Mathes Lisabeth, Sanford-Burnham Medical Research Institute;