

Product datasheet for **TA338321**

Syncollin (SYCN) Rabbit Polyclonal Antibody

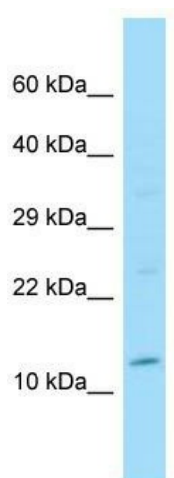
Product data:

Product Type:	Primary Antibodies
Applications:	WB
Recommended Dilution:	WB
Reactivity:	Human
Host:	Rabbit
Isotype:	IgG
Clonality:	Polyclonal
Immunogen:	The immunogen for anti-SYCN antibody is: synthetic peptide directed towards the N-terminal region of Human SYCN. Synthetic peptide located within the following region: MSPLRPLLLALALASVPCAQGACPASADLKHSDGTRTCAKLYDKSDPYE
Formulation:	Liquid. Purified antibody supplied in 1x PBS buffer with 0.09% (w/v) sodium azide and 2% sucrose.
Purification:	Affinity Purified
Conjugation:	Unconjugated
Storage:	Store at -20°C as received.
Stability:	Stable for 12 months from date of receipt.
Predicted Protein Size:	15 kDa
Gene Name:	syncollin
Database Link:	NP_001073937 Entrez Gene 342898 Human Q0VAF6
Background:	SYCN functions in exocytosis in pancreatic acinar cells regulating the fusion of zymogen granules with each other. SYCN may have a pore-forming activity on membranes and regulate exocytosis in other exocrine tissues.
Synonyms:	INSSA1; SYL
Note:	Immunogen Sequence Homology: Human: 100%; Bovine: 100%; Dog: 86%; Pig: 86%; Rat: 79%; Mouse: 79%



[View online »](#)

Product images:



WB Suggested Anti-SYCN Antibody; Titration: 1.0 ug/ml; Positive Control: Fetal Liver