

Product datasheet for **TA338317**

CABLES1 Rabbit Polyclonal Antibody

Product data:

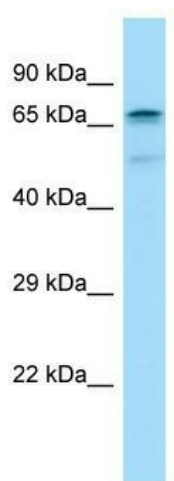
Product Type:	Primary Antibodies
Applications:	WB
Recommended Dilution:	WB
Reactivity:	Human
Host:	Rabbit
Isotype:	IgG
Clonality:	Polyclonal
Immunogen:	The immunogen for anti-CABLES1 antibody is: synthetic peptide directed towards the C-terminal region of Human CABLES1. Synthetic peptide located within the following region: IRSLKREMRKLAQEDCGLEEPTVAMAFVYFEKLALKGKLNKQNRKLCAGA
Formulation:	Liquid. Purified antibody supplied in 1x PBS buffer with 0.09% (w/v) sodium azide and 2% sucrose. <i>Note that this product is shipped as lyophilized powder to China customers.</i>
Purification:	Affinity Purified
Conjugation:	Unconjugated
Storage:	Store at -20°C as received.
Stability:	Stable for 12 months from date of receipt.
Predicted Protein Size:	67 kDa
Gene Name:	Cdk5 and Abl enzyme substrate 1
Database Link:	NP_001094089 Entrez Gene 91768 Human Q8TDN4
Background:	This gene encodes a protein involved in regulation of the cell cycle through interactions with several cyclin-dependent kinases. One study reported aberrant splicing of transcripts from this gene which results in removal of the cyclin binding domain only in human cancer cells, and reduction in gene expression was shown in colorectal cancers. Multiple transcript variants encoding different isoforms have been found for this gene.
Synonyms:	CABL1; CABLES; HsT2563; IK3-1



[View online »](#)

Note: Immunogen Sequence Homology: Human: 100%; Bovine: 100%; Dog: 93%; Pig: 93%; Rat: 93%; Horse: 93%; Mouse: 93%; Rabbit: 93%; Guinea pig: 93%

Product images:



WB Suggested Anti-CABLES1 Antibody; Titration:
1.0 ug/ml; Positive Control: Fetal Heart