

Product datasheet for **TA338316**

Kininogen 1 (KNG1) Rabbit Polyclonal Antibody

Product data:

Product Type:	Primary Antibodies
Applications:	WB
Recommended Dilution:	WB
Reactivity:	Human
Host:	Rabbit
Isotype:	IgG
Clonality:	Polyclonal
Immunogen:	The immunogen for anti-KNG1 antibody: synthetic peptide directed towards the middle region of human KNG1. Synthetic peptide located within the following region: YPGKDFVQPPTKICVGCPRDIPTNSPELEETLHTITKLNAENNATFYFK
Formulation:	Liquid. Purified antibody supplied in 1x PBS buffer with 0.09% (w/v) sodium azide and 2% sucrose. <i>Note that this product is shipped as lyophilized powder to China customers.</i>
Purification:	Affinity Purified
Conjugation:	Unconjugated
Storage:	Store at -20°C as received.
Stability:	Stable for 12 months from date of receipt.
Predicted Protein Size:	72 kDa
Gene Name:	kininogen 1
Database Link:	NP_001095886 Entrez Gene 3827 Human P01042
Background:	This gene uses alternative splicing to generate two different proteins- high molecular weight kininogen (HMWK) and low molecular weight kininogen (LMWK). HMWK is essential for blood coagulation and assembly of the kallikrein-kinin system. Also, bradykinin, a peptide causing numerous physiological effects, is released from HMWK. In contrast to HMWK, LMWK is not involved in blood coagulation. Three transcript variants encoding different isoforms have been found for this gene. [provided by RefSeq, Oct 2009]



[View online »](#)

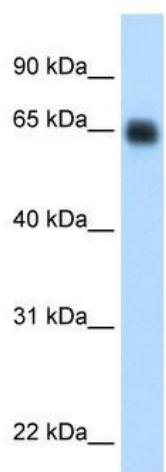
Synonyms: BDK; BK; KNG

Note: Immunogen Sequence Homology: Human: 100%; Pig: 92%; Horse: 85%; Mouse: 77%

Protein Families: Druggable Genome, Secreted Protein

Protein Pathways: Complement and coagulation cascades

Product images:



WB Suggested Anti-KNG1 Antibody Titration: 0.2-1 ug/ml; Positive Control: Human Liver