

Product datasheet for **TA338315**

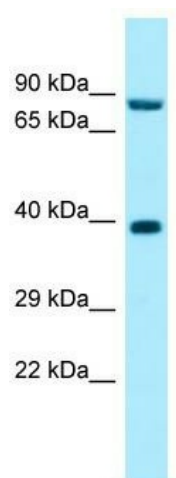
RPP30 Rabbit Polyclonal Antibody

Product data:

Product Type:	Primary Antibodies
Applications:	WB
Recommended Dilution:	WB
Reactivity:	Human
Host:	Rabbit
Isotype:	IgG
Clonality:	Polyclonal
Immunogen:	The immunogen for anti-RPP30 antibody is: synthetic peptide directed towards the C-terminal region of Human RPP30. Synthetic peptide located within the following region: DAKAAVSTNCRAALLHGETRKTAFGIISTVKKPRPSEGDEDCLPASKKAK
Formulation:	Liquid. Purified antibody supplied in 1x PBS buffer with 0.09% (w/v) sodium azide and 2% sucrose. <i>Note that this product is shipped as lyophilized powder to China customers.</i>
Purification:	Affinity Purified
Conjugation:	Unconjugated
Storage:	Store at -20°C as received.
Stability:	Stable for 12 months from date of receipt.
Predicted Protein Size:	35 kDa
Gene Name:	ribonuclease P/MRP subunit p30
Database Link:	NP_001098016 Entrez Gene 10556 Human P78346
Background:	The function of this protein remains unknown.
Synonyms:	TSG15
Note:	Immunogen Sequence Homology: Human: 100%; Dog: 86%; Pig: 86%; Rabbit: 86%; Guinea pig: 86%; Horse: 79%



[View online »](#)

Product images:

WB Suggested Anti-RPP30 Antibody; Titration: 1.0 ug/ml; Positive Control: 293T Whole Cell RPP30 is supported by BioGPS gene expression data to be expressed in HEK293T