

Product datasheet for **TA338313**

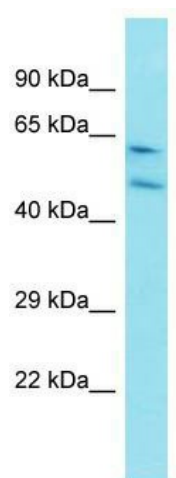
Ccni Rabbit Polyclonal Antibody

Product data:

| | |
|-------------------------|--|
| Product Type: | Primary Antibodies |
| Applications: | WB |
| Recommended Dilution: | WB |
| Reactivity: | Rat |
| Host: | Rabbit |
| Isotype: | IgG |
| Clonality: | Polyclonal |
| Immunogen: | The immunogen for anti-Ccni antibody is: synthetic peptide directed towards the N-terminal region of Rat Ccni. Synthetic peptide located within the following region: MKFPGPLENQLSSLERAISREMQWKNVVKIPTNQNVSPSRDEVIQ |
| Formulation: | Liquid. Purified antibody supplied in 1x PBS buffer with 0.09% (w/v) sodium azide and 2% sucrose. <i>Note that this product is shipped as lyophilized powder to China customers.</i> |
| Purification: | Affinity Purified |
| Conjugation: | Unconjugated |
| Storage: | Store at -20°C as received. |
| Stability: | Stable for 12 months from date of receipt. |
| Predicted Protein Size: | 42 kDa |
| Gene Name: | cyclin I |
| Database Link: | NP_001099468 Entrez Gene 289500 Rat |
| Background: | The function of this protein remains unknown. |
| Synonyms: | CYC1; CYI |
| Note: | Immunogen Sequence Homology: Human: 100%; Dog: 93%; Rat: 93%; Horse: 93%; Mouse: 93%; Bovine: 93%; Pig: 86%; Rabbit: 86%; Guinea pig: 86% |



[View online »](#)

Product images:

Host: Rabbit; Target Name: Ccni; Sample Tissue:
Rat Lung lysates; Antibody Dilution: 1.0 ug/ml