

Product datasheet for **TA338312**

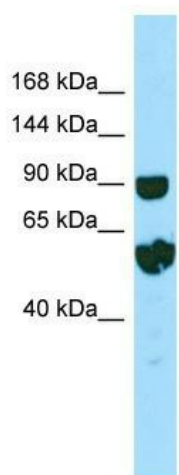
Repetin (RPTN) Rabbit Polyclonal Antibody

Product data:

Product Type:	Primary Antibodies
Applications:	WB
Recommended Dilution:	WB
Reactivity:	Human
Host:	Rabbit
Isotype:	IgG
Clonality:	Polyclonal
Immunogen:	The immunogen for anti-RPTN antibody is: synthetic peptide directed towards the C-terminal region of Human RPTN. Synthetic peptide located within the following region: GTQDRRTHKDEQNHQRRDRQTHEHEQSHQRRDRQTHEDKQNRQRRDRQTH
Formulation:	Liquid. Purified antibody supplied in 1x PBS buffer with 0.09% (w/v) sodium azide and 2% sucrose.
Purification:	Affinity Purified
Conjugation:	Unconjugated
Storage:	Store at -20°C as received.
Stability:	Stable for 12 months from date of receipt.
Predicted Protein Size:	91 kDa
Gene Name:	repetin
Database Link:	NP_001116437 Entrez Gene 126638 Human Q6XPR3
Background:	RPTN is involved in the cornified cell envelope formation. RPTN is a multifunctional epidermal matrix protein. RPTN reversibly binds calcium.
Synonyms:	FLJ39117
Note:	Immunogen Sequence Homology: Human: 100%; Rabbit: 85%; Bovine: 82%



[View online »](#)

Product images:

WB Suggested Anti-RPTN Antibody; Titration: 1.0 ug/ml; Positive Control: PANC1 Whole Cell