

Product datasheet for **TA338311**

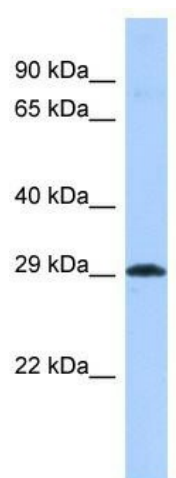
ACSF3 Rabbit Polyclonal Antibody

Product data:

Product Type:	Primary Antibodies
Applications:	WB
Recommended Dilution:	WB
Reactivity:	Human
Host:	Rabbit
Isotype:	IgG
Clonality:	Polyclonal
Immunogen:	The immunogen for anti-ACSF3 antibody is: synthetic peptide directed towards the C-terminal region of Human ACSF3. Synthetic peptide located within the following region: YWNKPEETKSAFTLDGWFKTGDTVVFKDGQYWIRGRSVDIIKTGGYKVS
Formulation:	Liquid. Purified antibody supplied in 1x PBS buffer with 0.09% (w/v) sodium azide and 2% sucrose. <i>Note that this product is shipped as lyophilized powder to China customers.</i>
Purification:	Affinity Purified
Conjugation:	Unconjugated
Storage:	Store at -20°C as received.
Stability:	Stable for 12 months from date of receipt.
Predicted Protein Size:	34 kDa
Gene Name:	acyl-CoA synthetase family member 3
Database Link:	NP_001120686 Entrez Gene 197322 Human Q4G176
Background:	The function of this protein remains unknown.
Synonyms:	FLJ39242
Note:	Immunogen Sequence Homology: Pig: 100%; Rat: 100%; Human: 100%; Mouse: 100%; Guinea pig: 100%; Dog: 93%; Horse: 93%; Bovine: 93%; Zebrafish: 93%; Yeast: 92%



[View online »](#)

Product images:

Host: Rabbit; Target Name: ACSF3; Sample
Tissue: MCF7 Whole cell lysates; Antibody
Dilution: 1.0 ug/ml