

## Product datasheet for **TA338310**

### Filamin C (FLNC) Rabbit Polyclonal Antibody

#### Product data:

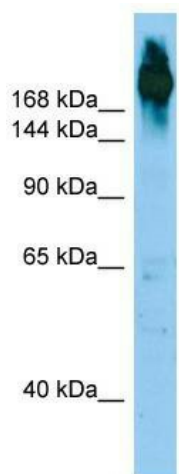
Product Type:	Primary Antibodies
Applications:	WB
Recommended Dilution:	WB
Reactivity:	Human
Host:	Rabbit
Isotype:	IgG
Clonality:	Polyclonal
Immunogen:	The immunogen for anti-FLNC antibody is: synthetic peptide directed towards the N-terminal region of Human FLNC. Synthetic peptide located within the following region: VGKSADFVVEAIGTEVGTGFSIEGPSQAKIECDDKGDGSCDVRYPTEP
Formulation:	Liquid. Purified antibody supplied in 1x PBS buffer with 0.09% (w/v) sodium azide and 2% sucrose.
Purification:	Affinity Purified
Conjugation:	Unconjugated
Storage:	Store at -20°C as received.
Stability:	Stable for 12 months from date of receipt.
Predicted Protein Size:	296 kDa
Gene Name:	filamin C
Database Link:	<a href="#">NP_001120959</a> <a href="#">Entrez Gene 2318 Human</a> <a href="#">Q14315</a>
Background:	This gene encodes one of three related filamin genes, specifically gamma filamin. These filamin proteins crosslink actin filaments into orthogonal networks in cortical cytoplasm and participate in the anchoring of membrane proteins for the actin cytoskeleton. Three functional domains exist in filamin: an N-terminal filamentous actin-binding domain, a C-terminal self-association domain, and a membrane glycoprotein-binding domain. Two transcript variants encoding different isoforms have been found for this gene.
Synonyms:	ABP-280; ABP280A; ABPA; ABPL; CMH26; FLN2; MFM5; MPD4; RCM5


[View online »](#)

**Note:** Immunogen Sequence Homology: Dog: 100%; Pig: 100%; Rat: 100%; Horse: 100%; Human: 100%; Mouse: 100%; Bovine: 100%; Rabbit: 100%; Zebrafish: 100%; Guinea pig: 100%

**Protein Pathways:** Focal adhesion, MAPK signaling pathway

**Product images:**



WB Suggested Anti-FLNC Antibody; Titration: 1.0 ug/ml; Positive Control: HepG2 Whole Cell