

## Product datasheet for **TA338309**

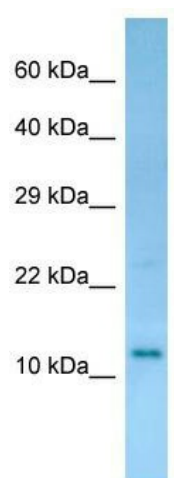
### **RGD1308134 Rabbit Polyclonal Antibody**

#### **Product data:**

<b>Product Type:</b>	Primary Antibodies
<b>Applications:</b>	WB
<b>Recommended Dilution:</b>	WB
<b>Reactivity:</b>	Rat
<b>Host:</b>	Rabbit
<b>Isotype:</b>	IgG
<b>Clonality:</b>	Polyclonal
<b>Immunogen:</b>	The immunogen for anti-RGD1308134 antibody is: synthetic peptide directed towards the N-terminal region of Rat RGD1308134. Synthetic peptide located within the following region: VKRFGDDLNHISCVIKERTVAQIKTTVKRKVYEDSGIPLPAESPKKGPCK
<b>Formulation:</b>	Liquid. Purified antibody supplied in 1x PBS buffer with 0.09% (w/v) sodium azide and 2% sucrose. <i>Note that this product is shipped as lyophilized powder to China customers.</i>
<b>Purification:</b>	Affinity Purified
<b>Conjugation:</b>	Unconjugated
<b>Storage:</b>	Store at -20°C as received.
<b>Stability:</b>	Stable for 12 months from date of receipt.
<b>Predicted Protein Size:</b>	18 kDa
<b>Gene Name:</b>	similar to RIKEN cDNA 1110020A23
<b>Database Link:</b>	<a href="#">NP_001120993</a> <a href="#">Entrez Gene 287452 Rat</a>
<b>Background:</b>	The function of this protein remains unknown.
<b>Synonyms:</b>	RGD1308134
<b>Note:</b>	Immunogen Sequence Homology: Dog: 100%; Pig: 100%; Rat: 100%; Horse: 100%; Human: 100%; Mouse: 100%; Guinea pig: 100%; Bovine: 93%; Rabbit: 86%; Zebrafish: 79%



[View online »](#)

**Product images:**

WB Suggested Anti-RGD1308134 Antibody;  
Titration: 1.0 ug/ml; Positive Control: Rat Small  
Intestine