

Product datasheet for **TA338307**

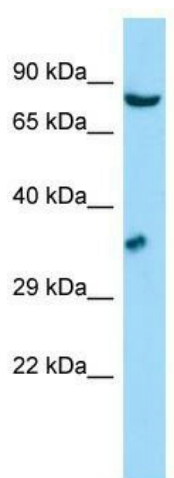
GSPT1 Rabbit Polyclonal Antibody

Product data:

Product Type:	Primary Antibodies
Applications:	WB
Recommended Dilution:	WB
Reactivity:	Human
Host:	Rabbit
Isotype:	IgG
Clonality:	Polyclonal
Immunogen:	The immunogen for anti-GSPT1 antibody is: synthetic peptide directed towards the N-terminal region of Human GSPT1. Synthetic peptide located within the following region: AGGRAAPVESSQEEQSLCEGSNSAVSMELSEPIENGETEMSPEESWEHKE
Formulation:	Liquid. Purified antibody supplied in 1x PBS buffer with 0.09% (w/v) sodium azide and 2% sucrose. <i>Note that this product is shipped as lyophilized powder to China customers.</i>
Purification:	Affinity Purified
Conjugation:	Unconjugated
Storage:	Store at -20°C as received.
Stability:	Stable for 12 months from date of receipt.
Predicted Protein Size:	70 kDa
Gene Name:	G1 to S phase transition 1
Database Link:	NP_001123478 Entrez Gene 2935 Human P15170
Background:	The function of this protein remains unknown.
Synonyms:	551G9.2; eRF3a; ETF3A; GST1
Note:	Immunogen Sequence Homology: Human: 100%; Rabbit: 100%; Rat: 93%; Bovine: 93%; Dog: 87%; Pig: 87%
Protein Families:	Transmembrane



[View online »](#)

Product images:

WB Suggested Anti-GSPT1 Antibody; Titration: 1.0 ug/ml; Positive Control: HepG2 Whole Cell GSPT1 is strongly supported by BioGPS gene expression data to be expressed in Human HepG2 cells