

Product datasheet for **TA338306**

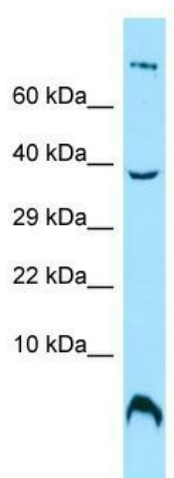
OST4 Rabbit Polyclonal Antibody

Product data:

Product Type:	Primary Antibodies
Applications:	WB
Recommended Dilution:	WB
Reactivity:	Human
Host:	Rabbit
Isotype:	IgG
Clonality:	Polyclonal
Immunogen:	The immunogen for anti-OST4 antibody is: synthetic peptide directed towards the C-terminal region of Human OST4. Synthetic peptide located within the following region: MITDVQLAIFANMLGVSLFLLVLYHYVAVNNPKKQE
Formulation:	Liquid. Purified antibody supplied in 1x PBS buffer with 0.09% (w/v) sodium azide and 2% sucrose. <i>Note that this product is shipped as lyophilized powder to China customers.</i>
Purification:	Affinity Purified
Conjugation:	Unconjugated
Storage:	Store at -20°C as received.
Stability:	Stable for 12 months from date of receipt.
Predicted Protein Size:	4 kDa
Gene Name:	oligosaccharyltransferase complex subunit 4, non-catalytic
Database Link:	NP_001128165 Entrez Gene 100128731 Human POC6T2
Background:	OST4 may be involved in N-glycosylation through its association with N-oligosaccharyl transferase.
Synonyms:	DKFZp586A0722
Note:	Immunogen Sequence Homology: Rat: 100%; Human: 100%; Mouse: 100%; Zebrafish: 93%; Dog: 83%



[View online »](#)

Product images:

WB Suggested Anti-OST4 Antibody; Titration: 1.0 ug/ml; Positive Control: MCF7 Whole Cell