

## Product datasheet for **TA338304**

### **RPL28 Rabbit Polyclonal Antibody**

#### **Product data:**

Product Type:	Primary Antibodies
Applications:	WB
Recommended Dilution:	WB
Reactivity:	Human
Host:	Rabbit
Isotype:	IgG
Clonality:	Polyclonal
Immunogen:	The immunogen for anti-RPL28 antibody is: synthetic peptide directed towards the N-terminal region of Human RPL28. Synthetic peptide located within the following region: LIHRKTVGVEPAADGKGVVVVIKRRSGQRKPATSYVRTTINKNARATLSS
Formulation:	Liquid. Purified antibody supplied in 1x PBS buffer with 0.09% (w/v) sodium azide and 2% sucrose. <i>Note that this product is shipped as lyophilized powder to China customers.</i>
Purification:	Affinity Purified
Conjugation:	Unconjugated
Storage:	Store at -20°C as received.
Stability:	Stable for 12 months from date of receipt.
Predicted Protein Size:	19 kDa
Gene Name:	ribosomal protein L28
Database Link:	<a href="#">NP_001129607</a> <a href="#">Entrez Gene 6158 Human</a> <a href="#">P46779</a>



[View online »](#)

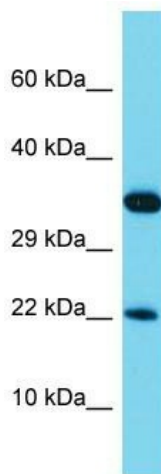
**Background:** Ribosomes, the organelles that catalyze protein synthesis, consist of a small 40S subunit and a large 60S subunit. Together these subunits are composed of 4 RNA species and approximately 80 structurally distinct proteins. This gene encodes a ribosomal protein that is a component of the 60S subunit. The protein belongs to the L28E family of ribosomal proteins. It is located in the cytoplasm. Variable expression of this gene in colorectal cancers compared to adjacent normal tissues has been observed, although no correlation between the level of expression and the severity of the disease has been found. As is typical for genes encoding ribosomal proteins, there are multiple processed pseudogenes of this gene dispersed through the genome.

**Synonyms:** L28

**Note:** Immunogen Sequence Homology: Dog: 100%; Pig: 100%; Rat: 100%; Horse: 100%; Human: 100%; Mouse: 100%; Bovine: 100%; Rabbit: 100%; Guinea pig: 100%; Zebrafish: 92%

**Protein Pathways:** Ribosome

### Product images:



Host: Rabbit  
Target Name: RPL28  
Sample Tissue: HCT15 Cell Lysate  
Antibody Dilution: 1.0µg/ml

Host: Rabbit; Target Name: RPL28; Sample Tissue: HCT15 Whole Cell lysates; Antibody Dilution: 1.0 ug/ml RPL28 is strongly supported by BioGPS gene expression data to be expressed in Human HCT15 cells