

Product datasheet for **TA338303**

SEC14L1 Rabbit Polyclonal Antibody

Product data:

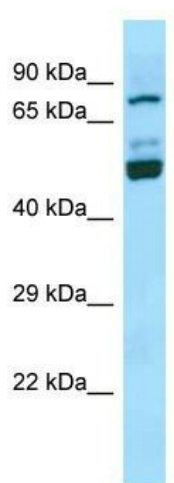
Product Type:	Primary Antibodies
Applications:	WB
Recommended Dilution:	WB
Reactivity:	Human
Host:	Rabbit
Isotype:	IgG
Clonality:	Polyclonal
Immunogen:	The immunogen for anti-SEC14L1 antibody is: synthetic peptide directed towards the N-terminal region of Human SEC14L1. Synthetic peptide located within the following region: GSDTVNEFKSEDGAIHVIERRCKLDVDAPRLKKIAGVDYVYFVQKNSLN
Formulation:	Liquid. Purified antibody supplied in 1x PBS buffer with 0.09% (w/v) sodium azide and 2% sucrose. <i>Note that this product is shipped as lyophilized powder to China customers.</i>
Purification:	Affinity Purified
Conjugation:	Unconjugated
Storage:	Store at -20°C as received.
Stability:	Stable for 12 months from date of receipt.
Predicted Protein Size:	77 kDa
Gene Name:	SEC14 like lipid binding 1
Database Link:	NP_001137473 Entrez Gene 6397 Human Q92503
Background:	The protein encoded by this gene belongs to the SEC14 cytosolic factor family. It has similarity to yeast SEC14 and to Japanese flying squid RALBP which suggests a possible role of the gene product in an intracellular transport system. Multiple alternatively spliced transcript variants have been found for this gene; some variants represent read-through transcripts that include exons from the upstream gene C17orf86.
Synonyms:	PRELID4A; SEC14L



[View online »](#)

Note: Immunogen Sequence Homology: Dog: 100%; Rat: 100%; Human: 100%; Rabbit: 100%; Pig: 92%; Horse: 92%; Mouse: 92%; Bovine: 92%; Guinea pig: 92%

Product images:



WB Suggested Anti-SEC14L1 Antibody; Titration: 1.0 ug/ml; Positive Control: Jurkat Whole Cell