

Product datasheet for **TA338302**

CD51 (ITGAV) Rabbit Polyclonal Antibody

Product data:

Product Type:	Primary Antibodies
Applications:	WB
Recommended Dilution:	WB
Reactivity:	Mouse, Human
Host:	Rabbit
Isotype:	IgG
Clonality:	Polyclonal
Immunogen:	The immunogen for anti-ITGAV antibody is: synthetic peptide directed towards the C-terminal region of Human ITGAV. Synthetic peptide located within the following region: PVWVILAVLAGLLLLAVLVFVMYRMGFFKRVPPQEEQEREQLQPHENG
Formulation:	Liquid. Purified antibody supplied in 1x PBS buffer with 0.09% (w/v) sodium azide and 2% sucrose. <i>Note that this product is shipped as lyophilized powder to China customers.</i>
Purification:	Affinity Purified
Conjugation:	Unconjugated
Storage:	Store at -20°C as received.
Stability:	Stable for 12 months from date of receipt.
Predicted Protein Size:	100 kDa
Gene Name:	integrin subunit alpha V
Database Link:	NP_001138471 Entrez Gene 16410 Mouse Entrez Gene 3685 Human P06756



[View online »](#)

Background: ITGAV encodes integrin alpha chain V. Integrins are heterodimeric integral membrane proteins composed of an alpha chain and a beta chain. The I-domain containing integrin alpha V undergoes post-translational cleavage to yield disulfide-linked heavy and light chains, that combine with multiple integrin beta chains to form different integrins. Among the known associating beta chains (beta chains 1,3,5,6, and 8; 'ITGB1', 'ITGB3', 'ITGB5', 'ITGB6', and 'ITGB8'), each can interact with extracellular matrix ligands; the alpha V beta 3 integrin, perhaps the most studied of these, is referred to as the Vitronectin receptor (VNR). In addition to adhesion, many integrins are known to facilitate signal transduction. Alternative splicing results in multiple transcript variants.

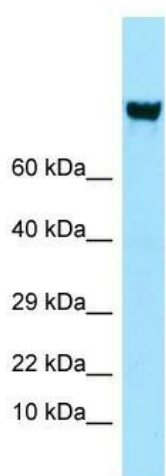
Synonyms: CD51; MSK8; VNRA; VTNR

Note: Immunogen Sequence Homology: Dog: 100%; Pig: 100%; Rat: 100%; Goat: 100%; Horse: 100%; Human: 100%; Mouse: 100%; Sheep: 100%; Bovine: 100%; Rabbit: 100%; Guinea pig: 100%

Protein Families: Druggable Genome, ES Cell Differentiation/IPS, Transmembrane

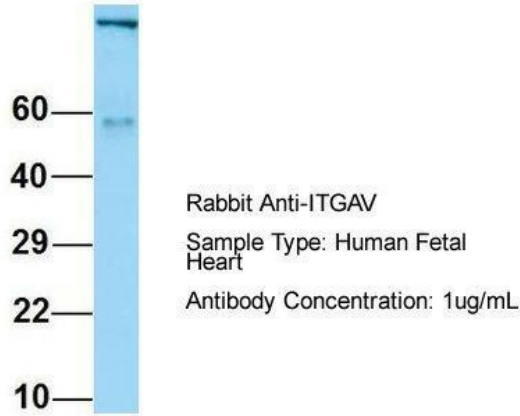
Protein Pathways: Arrhythmogenic right ventricular cardiomyopathy (ARVC), Cell adhesion molecules (CAMs), Dilated cardiomyopathy, ECM-receptor interaction, Focal adhesion, Hypertrophic cardiomyopathy (HCM), Pathways in cancer, Regulation of actin cytoskeleton, Small cell lung cancer

Product images:



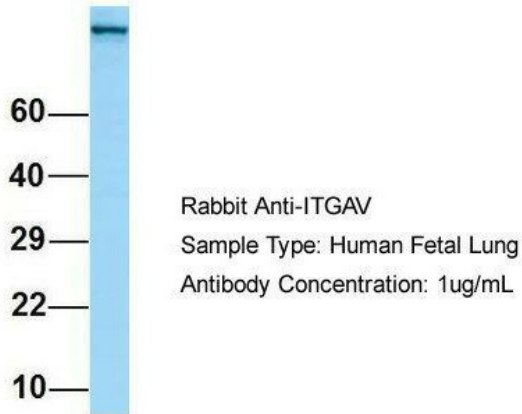
WB Suggested Anti-ITGAV Antibody; Titration: 1.0 ug/ml; Positive Control: PANC1 Whole Cell

ITGAV



Host: Rabbit; Target Name: ITGAV; Sample Tissue: Human Fetal Heart; Antibody Dilution: 1.0 µg/ml

ITGAV



Host: Rabbit; Target Name: ITGAV; Sample Tissue: Human Fetal Lung; Antibody Dilution: 1.0 µg/ml