

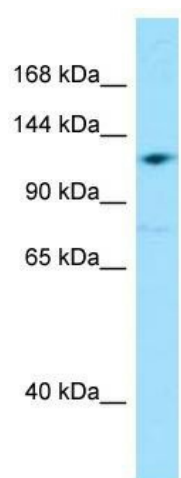
## Product datasheet for **TA338301**

### GRID2IP Rabbit Polyclonal Antibody

#### Product data:

Product Type:	Primary Antibodies
Applications:	WB
Recommended Dilution:	WB
Reactivity:	Human
Host:	Rabbit
Isotype:	IgG
Clonality:	Polyclonal
Immunogen:	The immunogen for anti-GRID2IP antibody is: synthetic peptide directed towards the middle region of Human GRID2IP. Synthetic peptide located within the following region: CFLGYTAMTAEPEPELDLESEPTPEPQPRSSLRASSMCRRSLRSQGLEAG
Formulation:	Liquid. Purified antibody supplied in 1x PBS buffer with 0.09% (w/v) sodium azide and 2% sucrose.
Purification:	Affinity Purified
Conjugation:	Unconjugated
Storage:	Store at -20°C as received.
Stability:	Stable for 12 months from date of receipt.
Predicted Protein Size:	132 kDa
Gene Name:	Grid2 interacting protein
Database Link:	<a href="#">NP_001138590</a> <a href="#">Entrez Gene 392862 Human</a> <a href="#">A4D2P6</a>
Background:	Glutamate receptor delta-2 is predominantly expressed at parallel fiber-Purkinje cell postsynapses and plays crucial roles in synaptogenesis and synaptic plasticity. GRID2IP1 interacts with GRID2 and may control GRID2 signaling in Purkinje cells.
Synonyms:	DELPHILIN
Note:	Immunogen Sequence Homology: Pig: 100%; Human: 100%; Guinea pig: 100%; Horse: 91%; Rat: 87%; Mouse: 87%; Rabbit: 86%; Bovine: 79%; Dog: 75%


[View online »](#)

**Product images:**


WB Suggested Anti-GRID2IP Antibody; Titration:  
1.0 ug/ml; Positive Control: HepG2 Whole Cell