

## Product datasheet for **TA338300**

### DSN1 Rabbit Polyclonal Antibody

#### Product data:

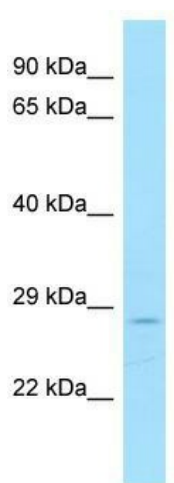
Product Type:	Primary Antibodies
Applications:	WB
Recommended Dilution:	WB
Reactivity:	Human
Host:	Rabbit
Isotype:	IgG
Clonality:	Polyclonal
Immunogen:	The immunogen for anti-DSN1 antibody is: synthetic peptide directed towards the C-terminal region of Human DSN1. Synthetic peptide located within the following region: MTYLGSSQNEVLNTPDYQKILQNSKVFDCMELVMDELQGSVKQLQAFM
Formulation:	Liquid. Purified antibody supplied in 1x PBS buffer with 0.09% (w/v) sodium azide and 2% sucrose. <i>Note that this product is shipped as lyophilized powder to China customers.</i>
Purification:	Affinity Purified
Conjugation:	Unconjugated
Storage:	Store at -20°C as received.
Stability:	Stable for 12 months from date of receipt.
Predicted Protein Size:	28 kDa
Gene Name:	DSN1 homolog, MIS12 kinetochore complex component
Database Link:	<a href="#">NP_001138789</a> <a href="#">Entrez Gene 79980 Human</a> <a href="#">Q9H410</a>
Background:	This gene encodes a kinetochore protein that functions as part of the minichromosome instability-12 centromere complex. The encoded protein is required for proper kinetochore assembly and progression through the cell cycle. Alternative splicing results in multiple transcript variants.
Synonyms:	C20orf172; dj469A13.2; hKNL-3; KNL3; MIS13



[View online »](#)

**Note:** Immunogen Sequence Homology: Human: 100%; Pig: 93%; Rat: 93%; Bovine: 93%; Rabbit: 93%; Guinea pig: 93%; Dog: 86%; Horse: 86%; Mouse: 85%

### Product images:



WB Suggested Anti-DSN1 Antibody; Titration: 1.0 ug/ml; Positive Control: MCF7 Whole Cell DSN1 is supported by BioGPS gene expression data to be expressed in MCF7